

JCL-33A MONITORING SOFTWARE

SWM-JCL01M

INSTRUCTION MANUAL

CONTENTS

On this manual	2
Notice when using SWM-JCL01M	2
On CD-ROM	2
1. Preparation before starting the SWM-JCL01M	
1.1 Operating environment	3
1.2 Installing the monitoring software	6
When the computer is running Windows 2000/XP	7
When the computer is running Windows 98/NT4.0/Me	11
1.3 Uninstalling the monitoring software	13
2. Starting and terminating the SWM-JCL01M	
2.1 Wiring between a personal computer and JCL-33A	16
2.2 Starting the monitoring software	19
2.3 Displays and operation of the monitoring software	21
2.3.1 Displays	
(1) Main display	21
(2) 1 channel display	23
(3) Setting display	26
(4) Chart display	31
(5) Chart plot condition setting display	32
(6) Logging display	33
(7) All channels display	35
2.3.2 Menu bar operation	
(1) Printer selection	38
(2) Printing	38
(3) Terminating the monitoring software	38
(4) Channel name registration	39
(5) Timeout period selection	40
(6) Setting value Save/Load per channel	41
(7) Setting value Save/Load for all channels	43
(8) Alarm history display	45
(9) Help display	46
(10) Version information display	47

On this manual

This manual explains how to install SWM-JCL01M, JCL-33A monitoring software.

In this manual, Windows XP is used for purposes of explanation, however, other operating systems (Windows98/Me/NT4.0/2000) are applicable as well.

Notice when using SWM-JCL01M

Shinko software: Terms of use

1. License

(1) This software can only be used upon accepting Terms of Use.

Please read carefully these Terms of Use before using this software.

(2) You may not reverse engineer, decompile or disassemble the software.

2. Copyright

The copyright for this software belongs to Shinko Technos Co., Ltd.

3. Limitation of usage

You may not rent, lease or lend this software.

4. Photocopy of the software

It is against the law to photocopy the software on any medium.

5. Disclaimers

(1) Shinko Technos Co., Ltd makes no warranty regarding the use of this software.

Users are liable for any problems occurring from the use of this software.

(2) Shinko Technos Co., Ltd is not liable for any damages, whether direct, indirect, special, incidental, or consequential (including loss of business profits, business interruption, or any other pecuniary loss), as a result of using this software, even when Shinko Technos Co., Ltd has been informed of the possibility of the damage.

Specifications of this software and Information in the manual are subject to change without notice.

On CD-ROM

- In the CD-ROM, the following files are included.

The information on installation method of SWM-JCL01M, JCL-33A monitoring software is contained in the following file.

Install_E.txt/ Install_J.txt

The information on usage license and copyright of SWM-JCL01M, JCL-33A monitoring software, is contained in the following file.

Readme_E.txt/Readme_J.txt

The following is the file for installing SWM-JCL01M, JCL-33A monitoring software.

For Windows 2000/XP, use this file.

SWM-JCL01M_Vxxx.msi [in Windows2000_XP folder]

The following is the file for installing SWM-JCL01M, JCL-33A monitoring software.

If the software cannot be installed using the file mentioned above (SWM-JCL01M_Vxxx.msi), use this file. For Windows 98/NT4.0/Me, use this file as well.

setup.exe [in Windows98_Me folder]

If the CD-ROM cannot be read, clean the CD-ROM drive lens with a commercial CD lens cleaner.

If CD itself is dirty, clean the CD with a soft cloth before using it.

If the CD-ROM cannot be read after it has been cleaned, the CD-ROM drive (on the personal computer) may be broken. Consult with the shop where you purchased the computer or its manufacturer.

- Windows98/NT4.0/Me/2000/XP are registered trademarks of Microsoft Corporation.

1. Preparation before starting the SWM-JCL01M

1.1 Operating environment

JCL-33A monitoring software "SWM-JCL01M" will run under the following system requirements.

• Personal computer

Personal computer which is running Windows 98/Me/NT4.0/2000/XP

- CPU Pentium4 800MHz or more
- Main memory Windows 98/Me/NT4.0: 128MByte or more
Windows 2000 : 256MByte or more
Windows XP : 512MByte or more
- Hard disk 10 Megabytes or more of space available
- RS-232C interface equipment (COM1 to COM8)
- CD-ROM drive equipped

• Operating system

Windows XP Home Edition (English)
Windows XP Professional (English)
Windows 2000 Professional (English)
Windows Me (English)
Windows NT4.0 (English)
Windows 98 (English)

• Display

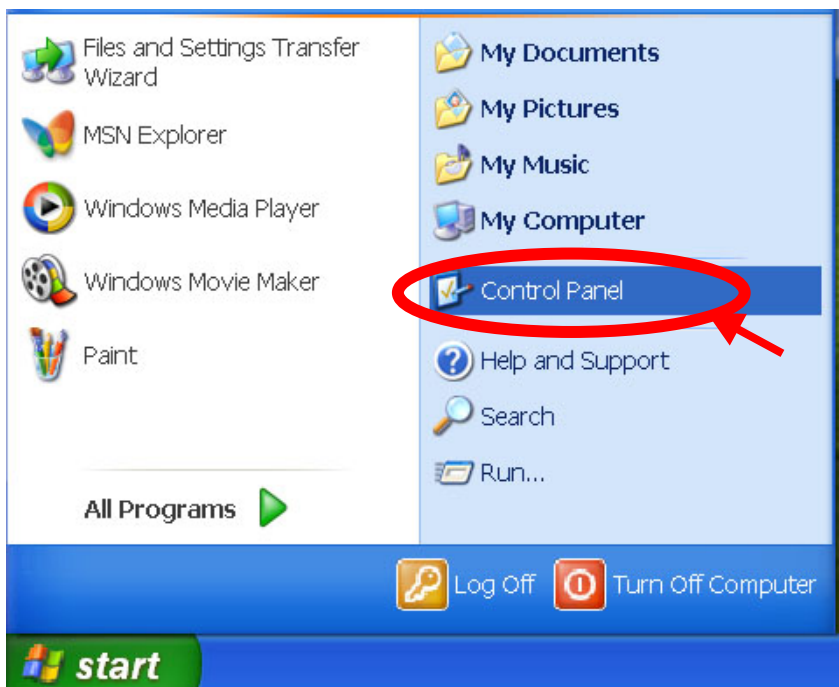
Resolution, 1024 x 768 dots or more,
Use "Normal fonts".
To set up the font, refer to pages 3 to 5.

● How to set the font size

To change the font from large to normal, follow the procedures below.

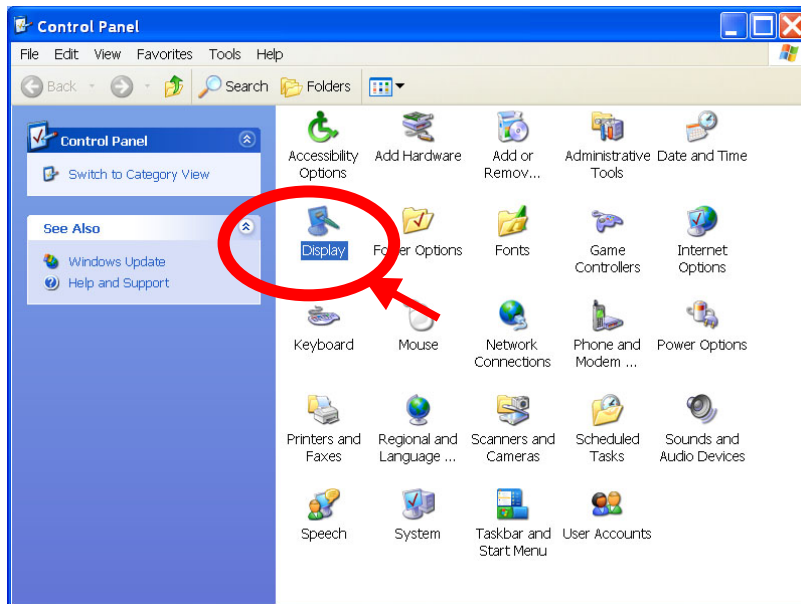
(1) Close all applications which are running.

Select [Control panel], and click.



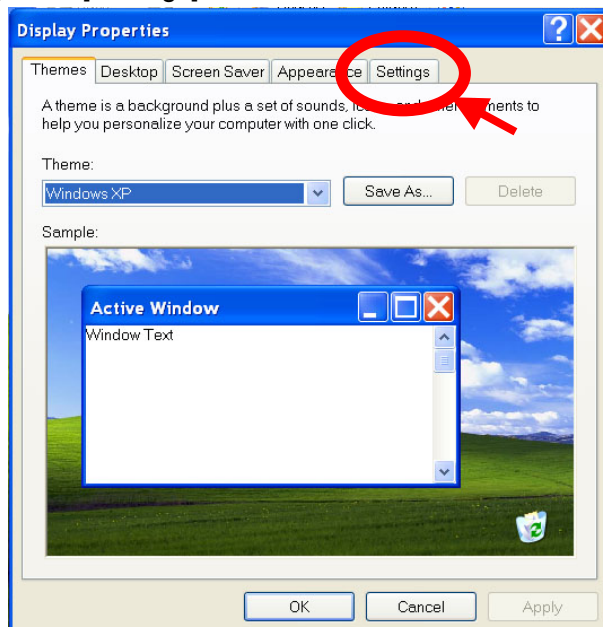
(Fig. 1.1-1)

(2) Double-click on the icon [Display].



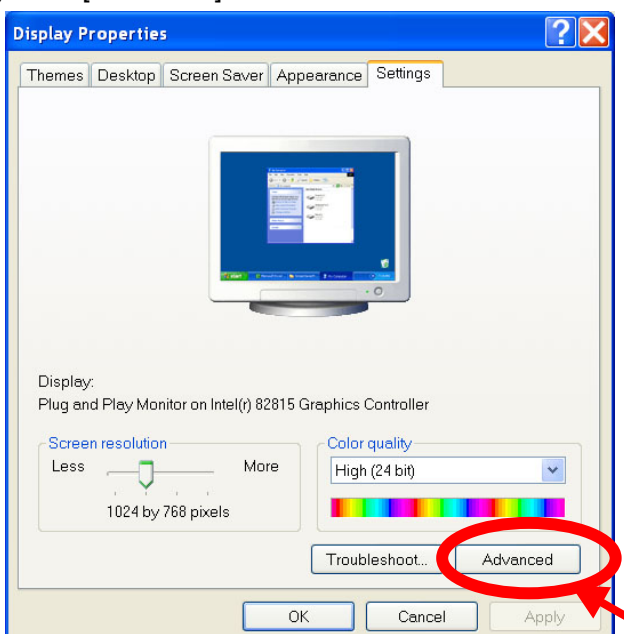
(Fig. 1.1-2)

(3) Click [Settings].



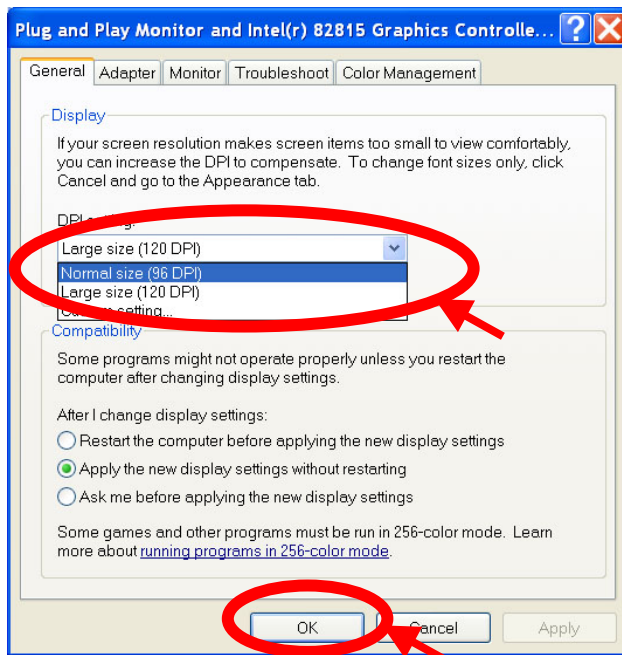
(Fig. 1.1-3)

(4) Click [Advanced].



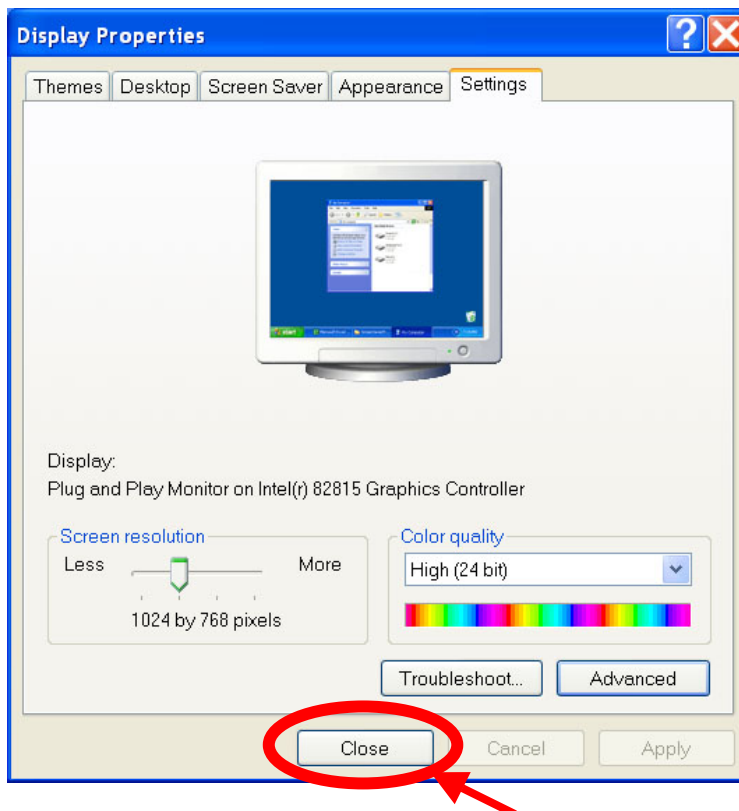
(Fig. 1.1-4)

(5) Select “Normal size (96 DPI)” and click [OK].



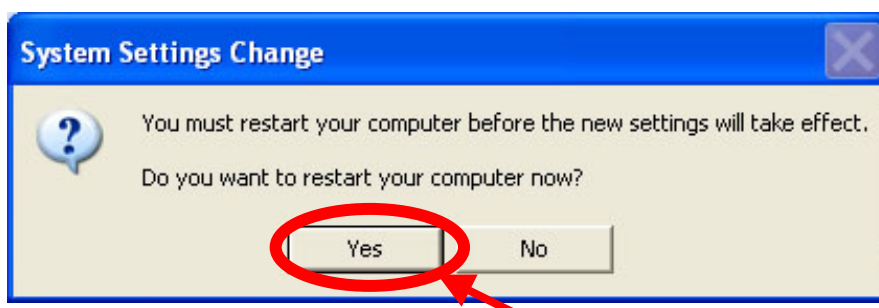
(Fig. 1.1-5)

(6) Click [Close].



(Fig. 1.1-6)

(7) Click [Yes].



(Fig. 1.1-7)

(8) After restarting the system, the font will be set to “Normal size”.

1.2 Installing the monitoring software

Before installing, close all applications which are running.

Set the font to “Normal size”. (See pages 3 to 5.)

The personal computer used here has the following drive configuration.

Setup method described in the manual is based on the assumption that the data is downloaded and decompressed onto D drive.

Designate a drive in accordance with your operating environment.

A drive : Floppy disk

C drive : Hard disk

D drive : Hard disk

E drive : CD-ROM

In the downloaded folder, 2 installation files are included as shown below.

The following is the file for installing SWM-JCL01M.

- **SWM-JCL01M_Vxxx.msi** [in Windows2000_XP folder]

For Windows 2000/XP, use this file.

For installation, see pages 7 to 11.

The following is the file for installing SWM-JCL01M.

- **setup.exe** [in Windows98_Me folder]

For Windows98/NT4.0/Me, use this file.

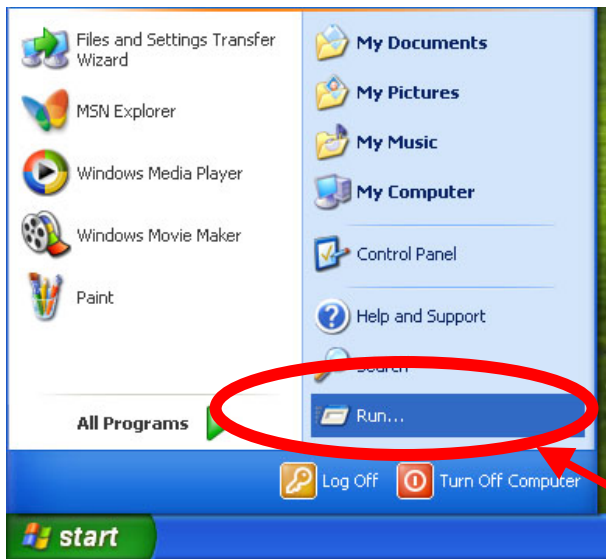
This file is also used when it is impossible to install SWM-JCL01M with the file

SWM-JCL01M_Vxxx.msi above.

For installation, see pages 11 to 12.

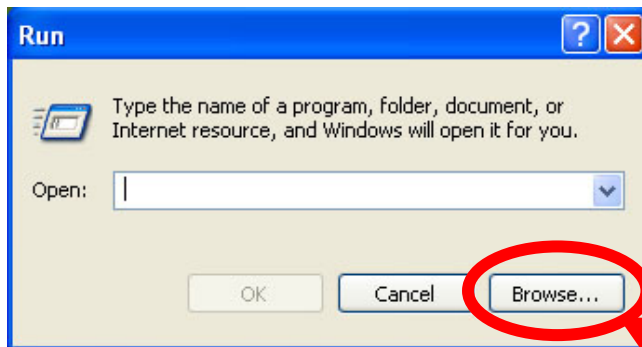
When the computer is running Windows 2000/XP

(1) Select [RUN...] on the start menu and click it.



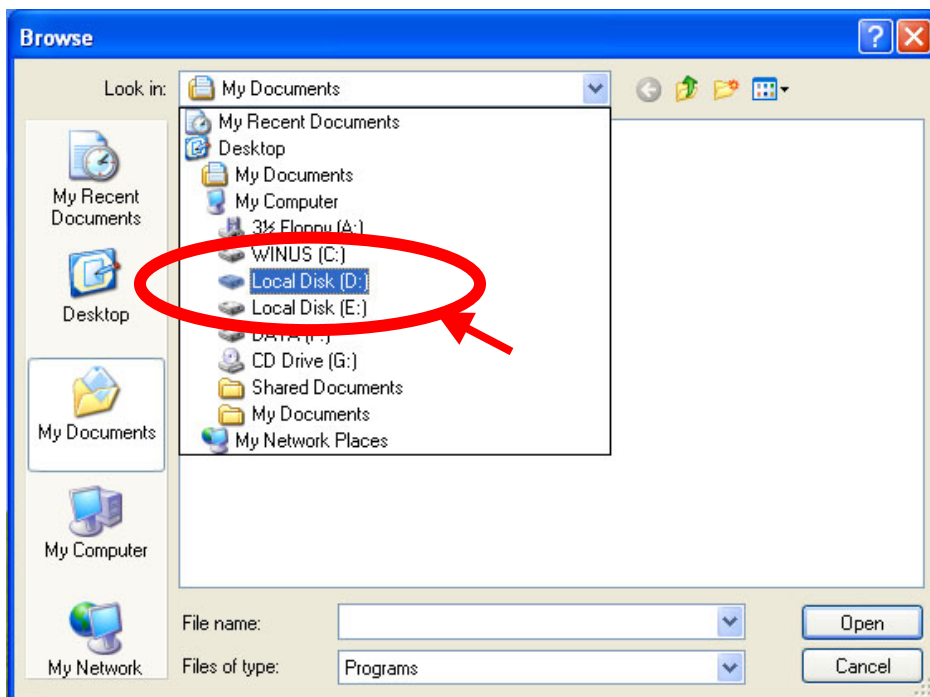
(Fig. 1.2-1)

(2) Click [Browse...].



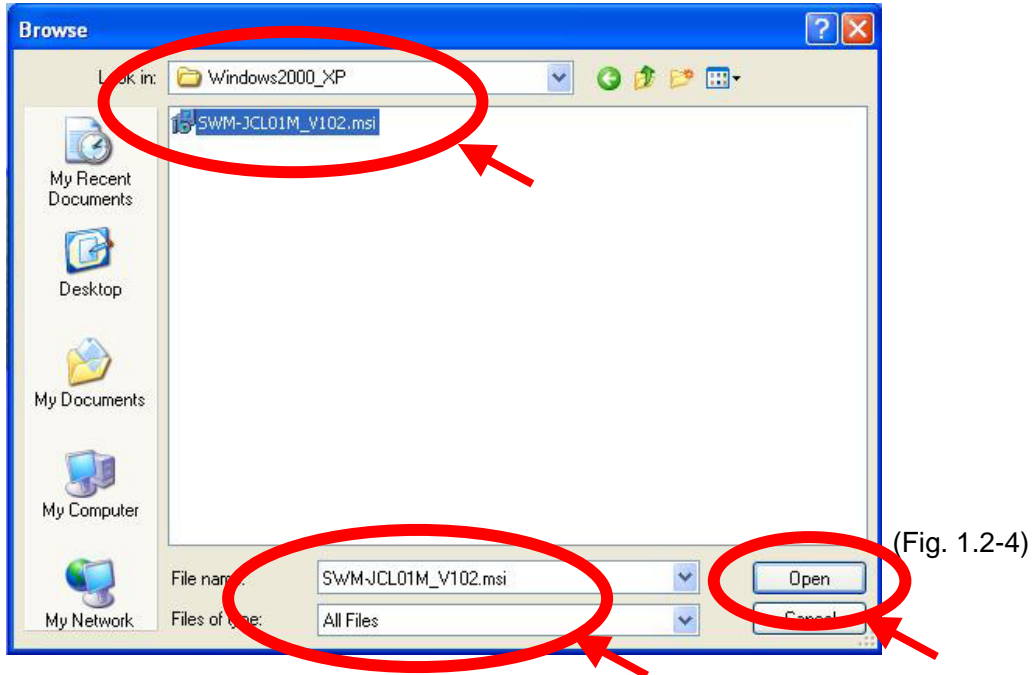
(Fig. 1.2-2)

(3) Select "Local Disk (D:)".

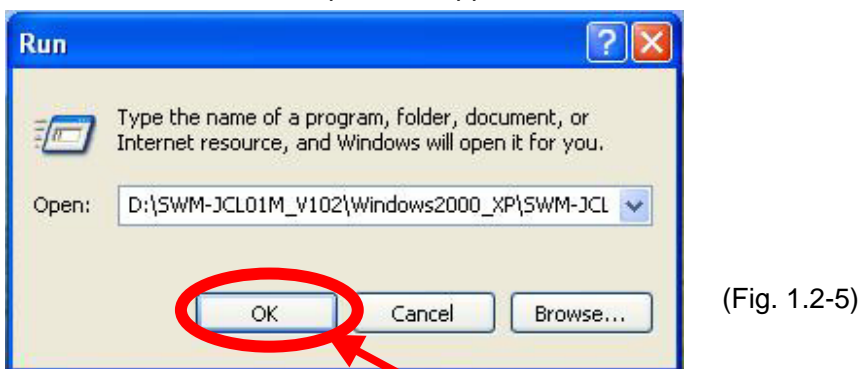


(Fig. 1.2-3)

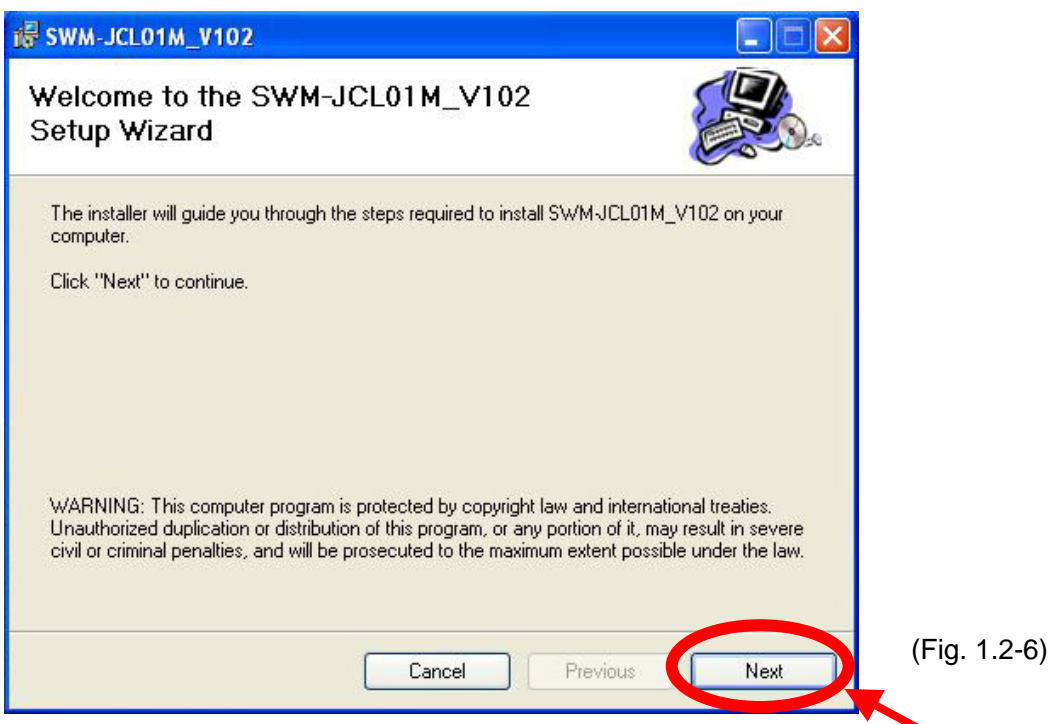
- (4) Select "SWM-JCL01M_Vxxx" - "Windows2000_XP" folder.
Select "All Files" from Files of type.
The file SWM-JCL01M_Vxxx.msi will appear, then select this file and click [Open].



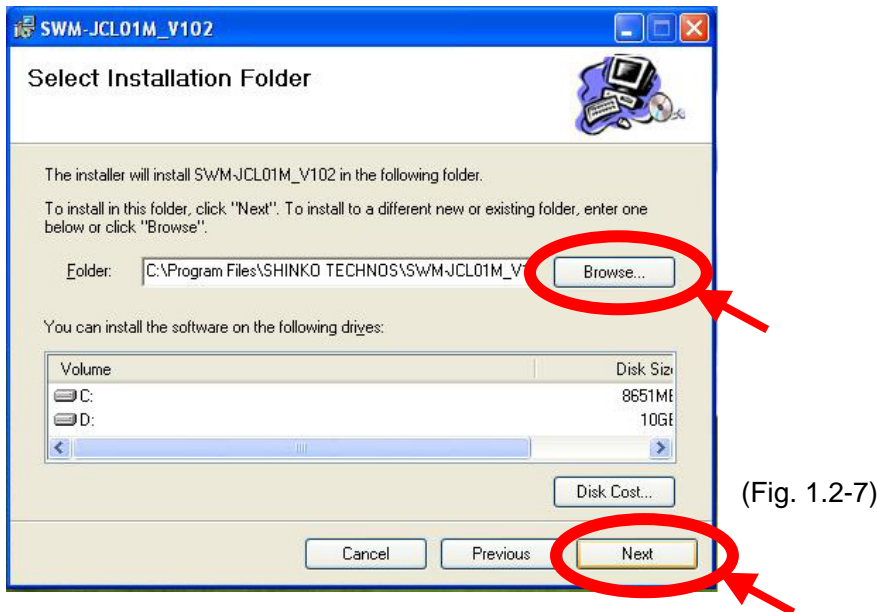
- (5) Click [OK].
SWM-JCL01M_Vxxx setup wizard appears.



- (6) Click [Next].
To cancel the installation, click [Cancel].

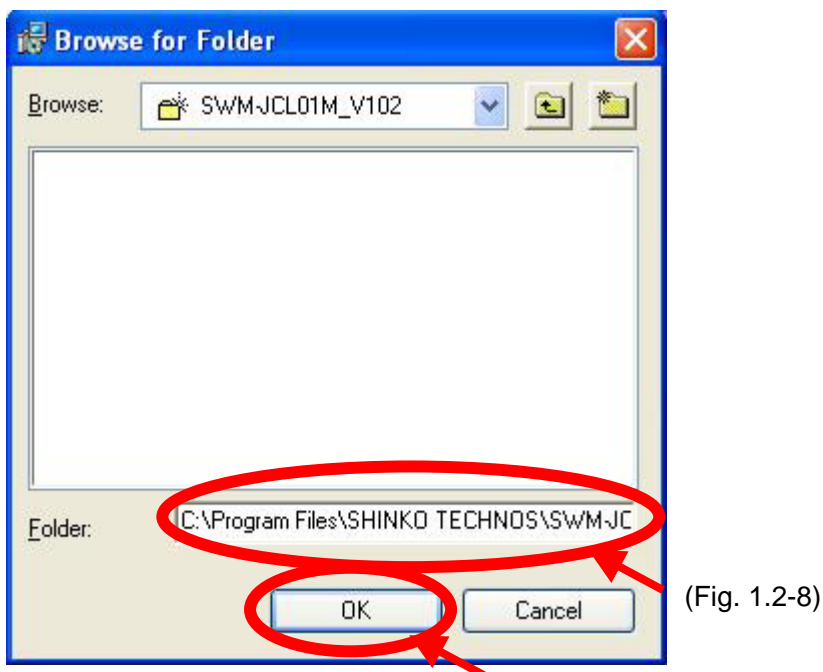


- (7) Confirm the name of the drive and folder (directory) for installation destination.
“C: \ Program Files\SWM-JCL01M_Vxxx\” has been already designated for installation as default.
If this designation is OK, click [Next].
To change the installation destination, click [Browse].
To cancel the installation, click [Cancel].
To return to the previous screen, click [Previous]

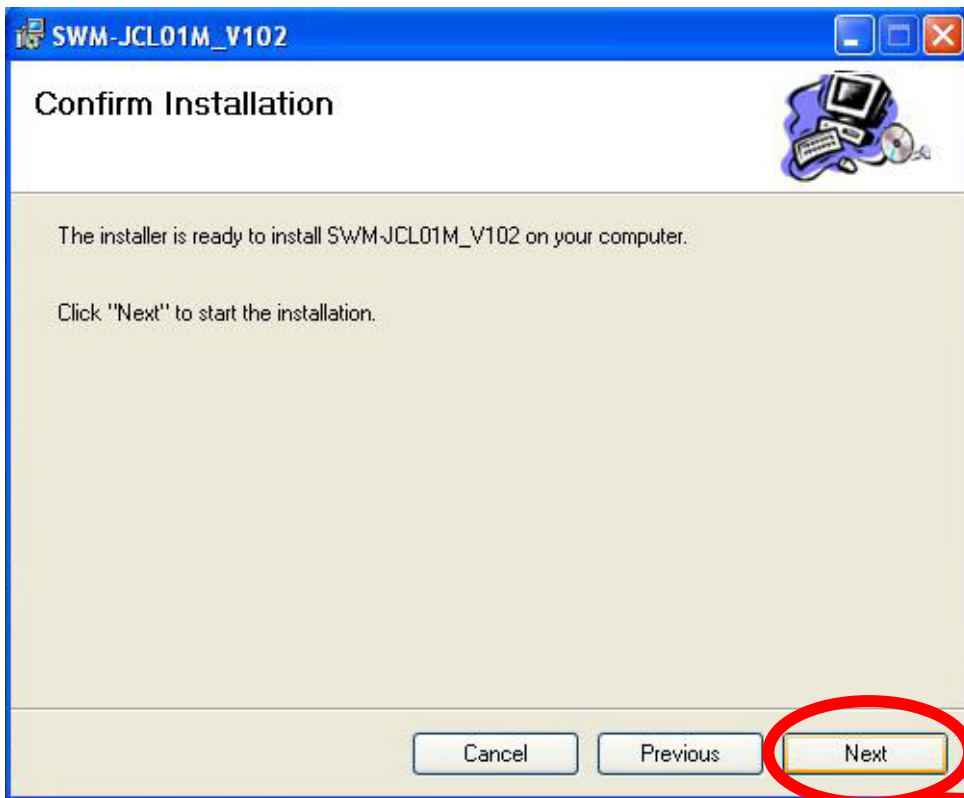


Displays for changing the installation destination

Designate the name of drive and folder (directory) and click [OK].
To revert to the previous display, click [Cancel].

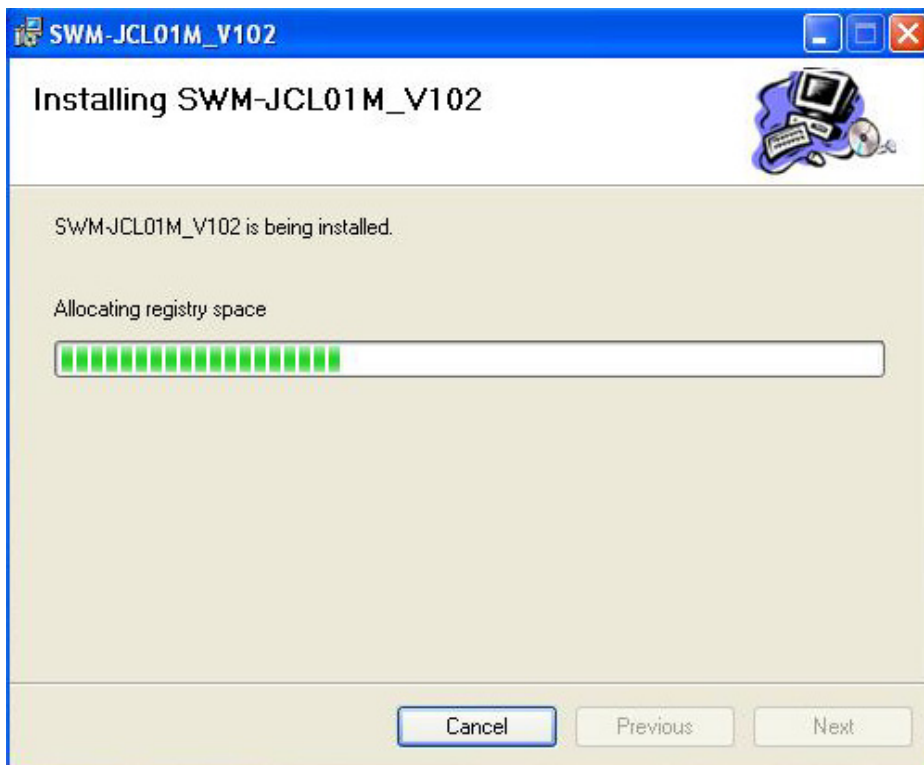


- (8) The screen for confirming installation appears.
Click [Next].
To cancel installation, click [Cancel].
To revert to the previous screen, click [Previous].



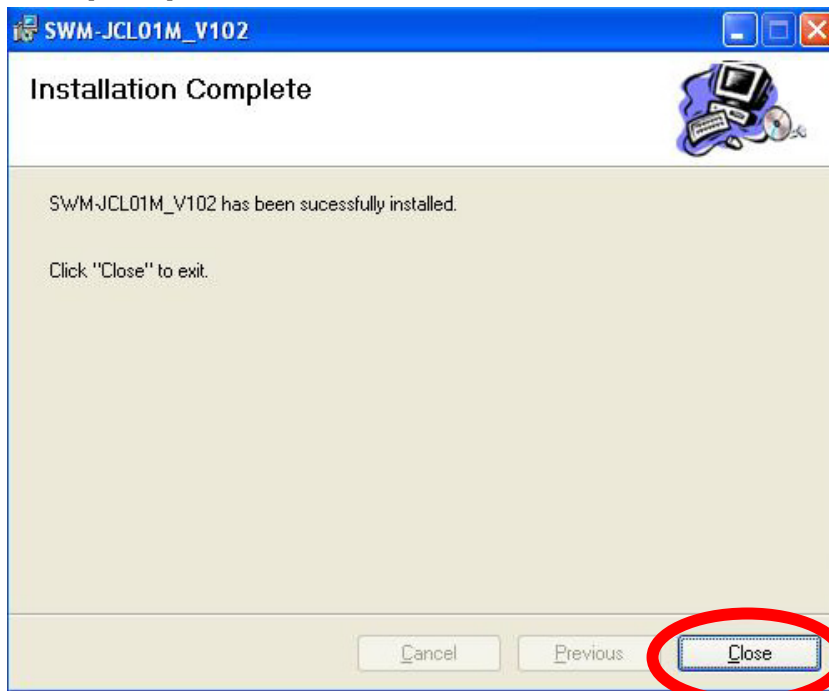
(Fig. 1.2-9)

- (9) The file copying status will be indicated with bar graph.
To cancel installation, click [Cancel].



(Fig. 1.2-10)

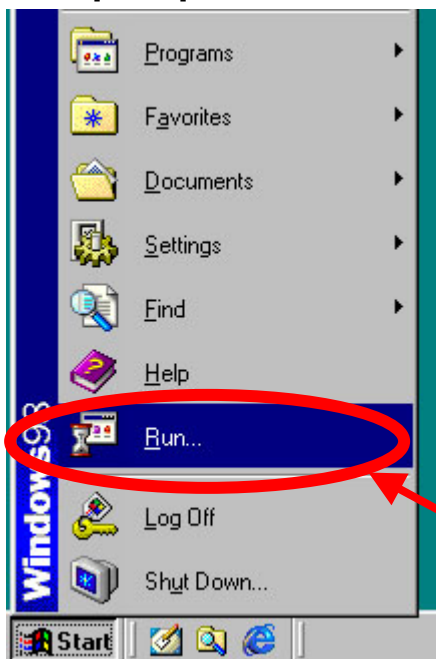
- (10) When installation is complete, the following display will appear.
Click [Close].



(Fig. 1.2-11)

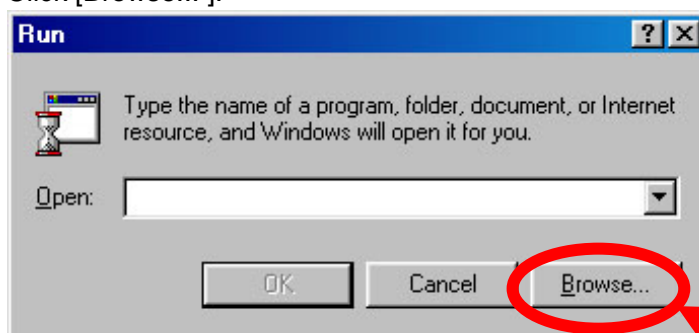
1.2.2 When the computer is running Windows 98/NT4.0/Me

- (1) Select [Run...] and click on it.



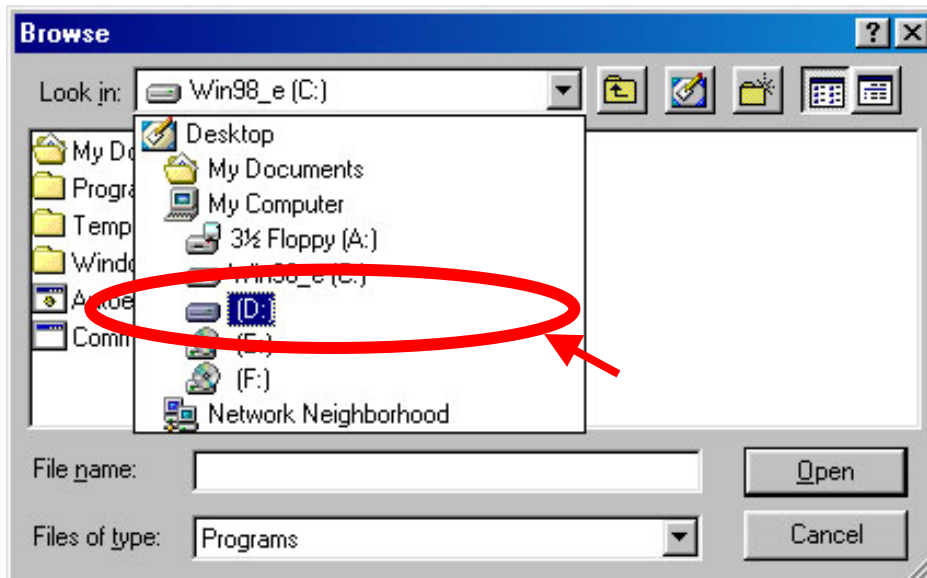
(Fig. 1.2-12)

- (2) Click [Browse...].



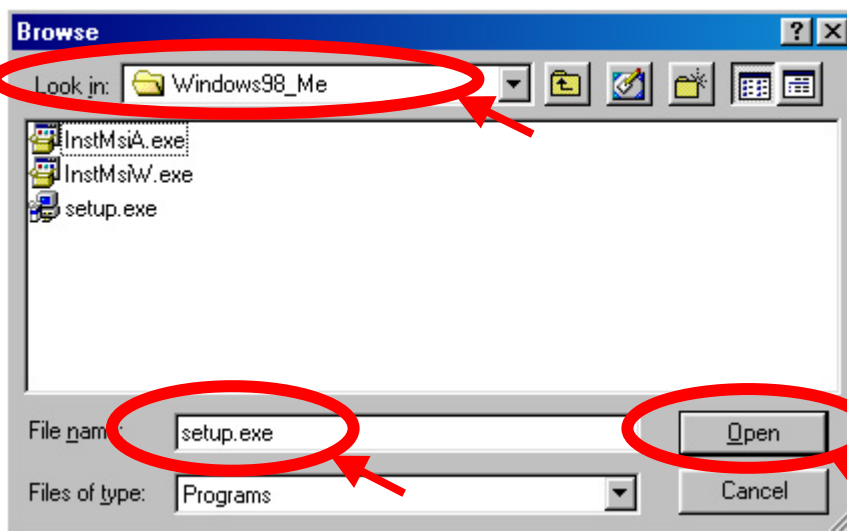
(Fig. 1.2-13)

(3) Select "Local Disk (D:)".



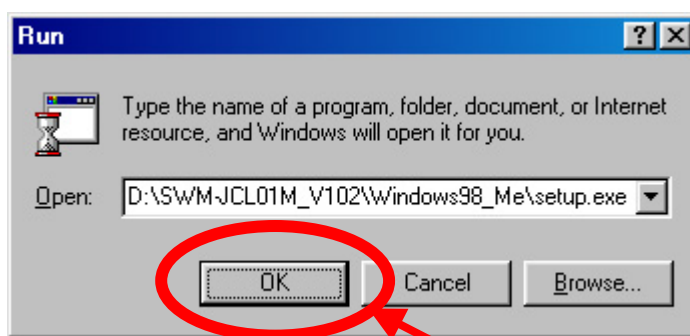
(Fig. 1.2-14)

(4) Select "SWM-JCL01M_Vxxx" - "Windows 98_Me" folder from [Look in].
Select "setup.exe" folder, and click [Open].



(Fig. 1.2-15)

(5) Click [OK].
SWM-JCL01M_Vxxx setup wizard appears.



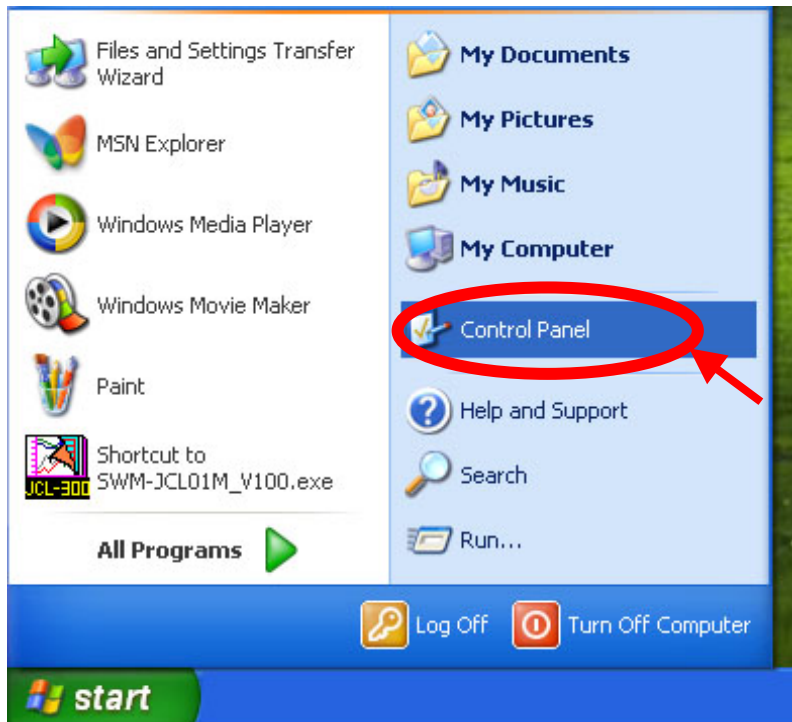
(Fig. 1.2-16)

(6) Installation method after (5) is the same as those of windows 2000/XP.
Please refer to step (6) and after (pages 8 to 11).

1.3 Uninstalling the monitoring software

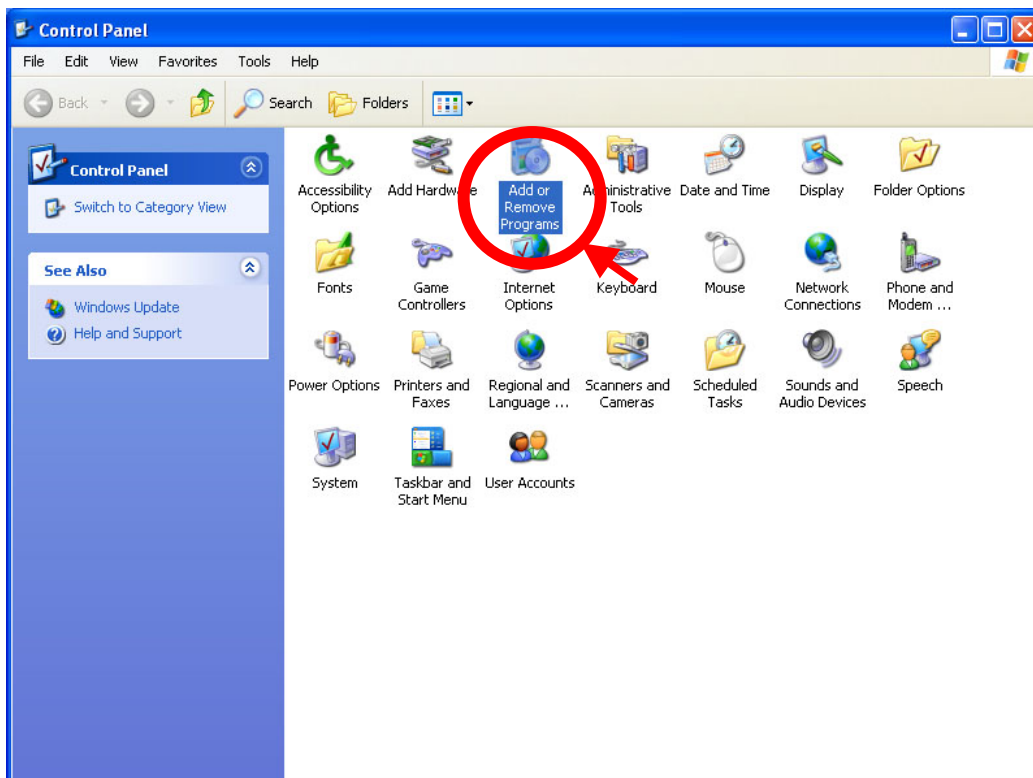
The procedures to uninstall the related files of the monitoring software “SWM-JCL01M” from the hard disk are described as follows.

- (1) Select [Control panel], and click.



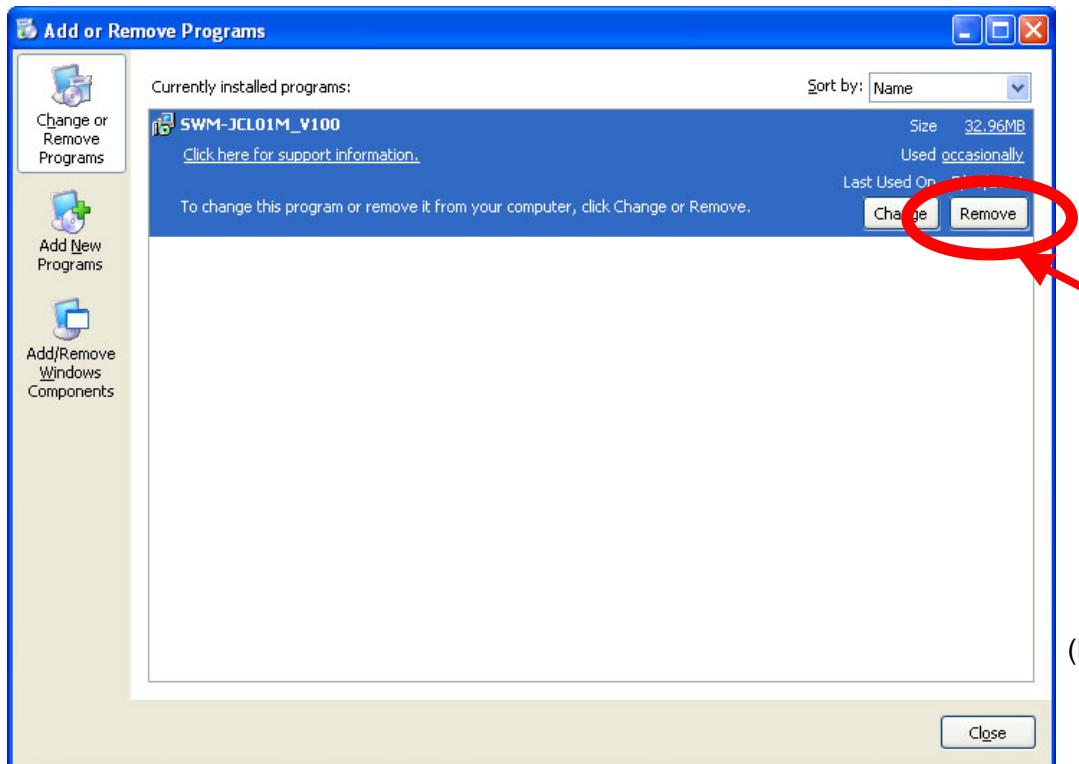
(Fig. 1.3-1)

- (2) Double-click on the icon [Add or Remove Programs].



(Fig. 1.3-2)

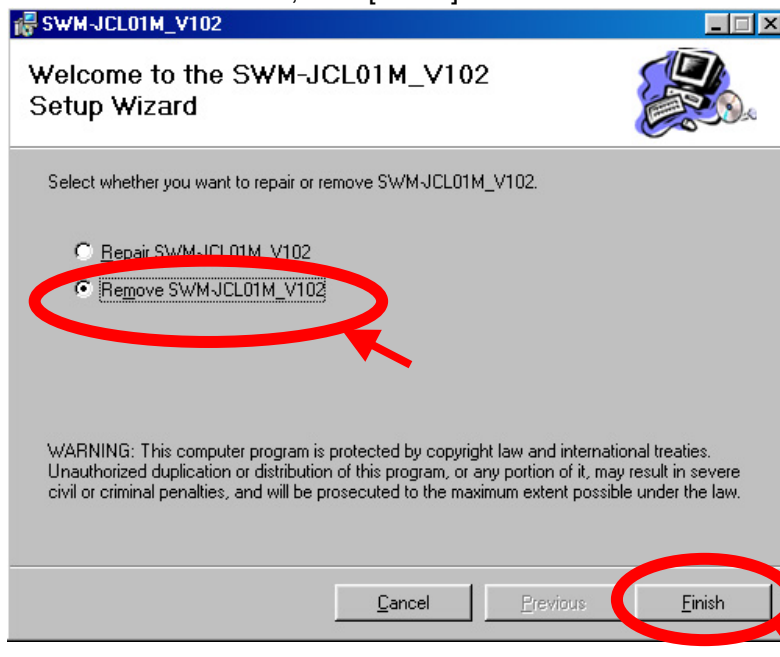
(3) Click or select “SWM-JCL01M_Vxxx” in the application list, and click [Remove].



(Fig. 1.3-3)

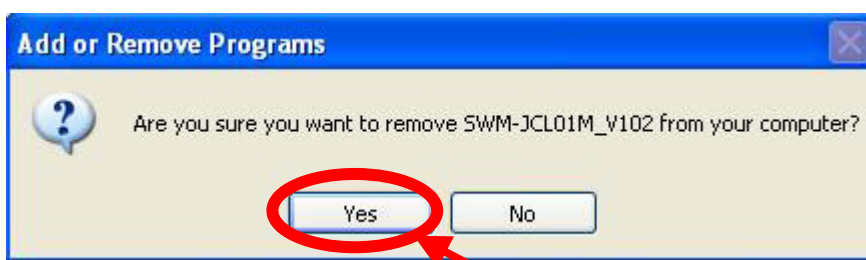
(4) The dialog box to confirm the removal will appear.

For Windows 2000/XP, click [Finish].



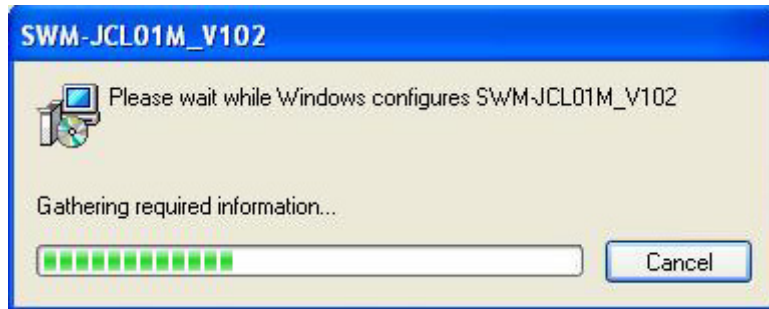
(Fig. 1.3-4)

For Windows 98/NT4.0/Me, click [Yes].



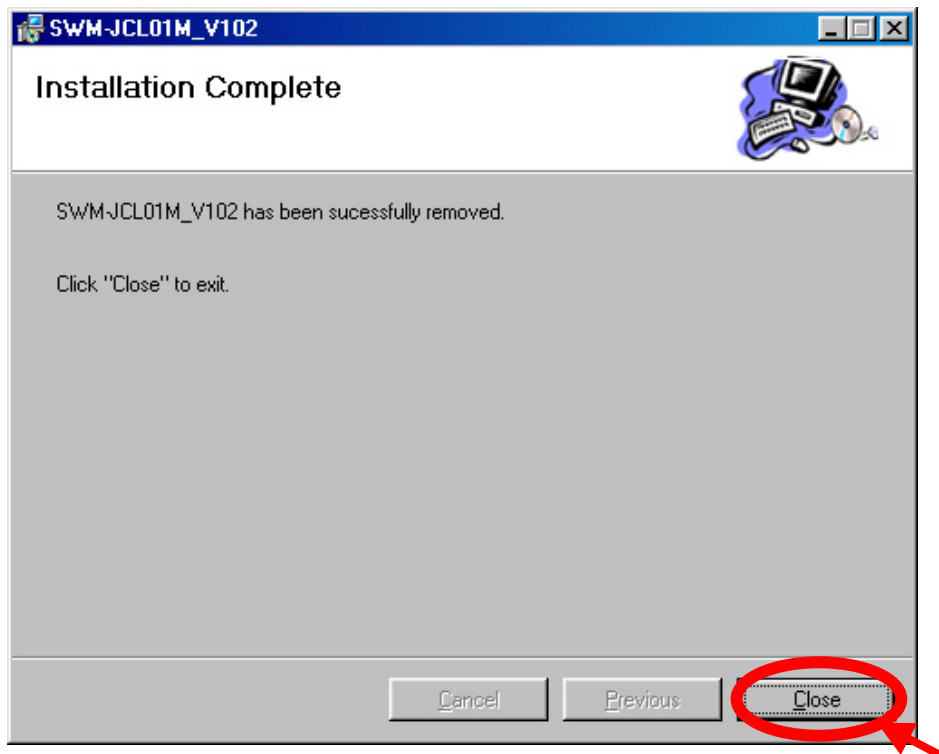
(Fig. 1.3-5)

- (5) The file uninstalling status will be indicated with bar graph.
To cancel uninstalling of software, click [Cancel].

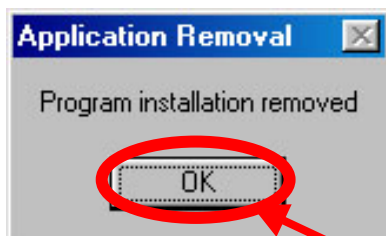


(Fig. 1.3-6)

- (6) If uninstalling the software is completed normally, the following display will appear.
For Windows 2000/XP (Fig. 1.3-7), click [Close].
For Windows 98/NT4.0/Me (Fig. 1.3-8), click [OK].



(Fig. 1.3-7)



(Fig.1.3-8)

2. Starting and terminating the SWM-JCL01M

2.1 Wiring between a personal computer and JCL-33A

Notice

Before starting the Monitoring software, check the following points, referring to “6. Settings” in the Instruction manual for JCL-33A.

- (1) The instrument numbers must begin from “0” in sequence. If not, the software cannot start.
(e.g.) When connecting three JCL-33A units, the instrument numbers must be 0, 1 and 2.
- (2) Set the communication speed in accordance with the personal computer and communication converter (19200bps is recommended).
- (3) A maximum of 80 units of the JCL-33A can be connected.
When connecting more than 32 units, use a Repeater.
(In the case of 80 units, 2 Repeater units are required.)

Wire the D-sub connector as shown below. Communication is impossible without wiring.

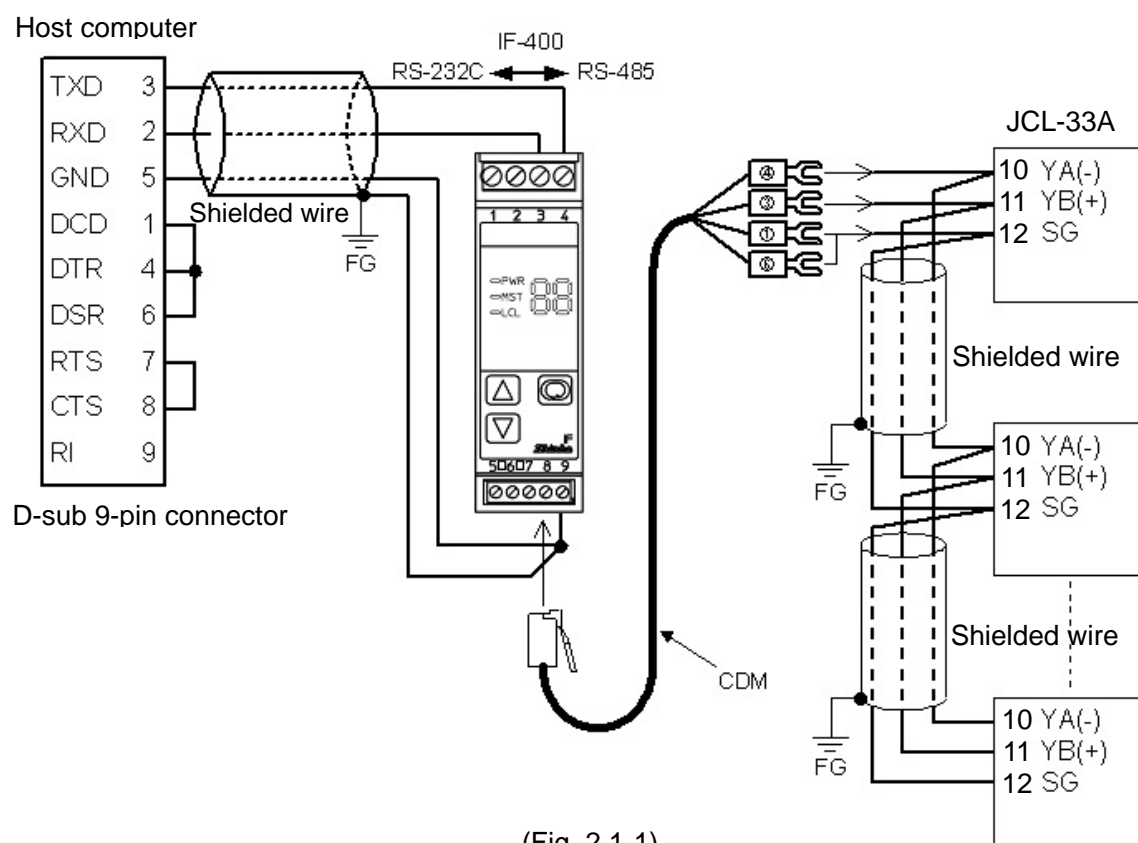
- D-sub 9-pin connector: Between terminals 1-4-6, between terminals 7-8
- D-sub 25-pin connector: Between terminals 4-5, between terminals 6-8-20

For wiring between a personal computer and JCL-33A, refer to “Wiring” in the Communication instruction manual for JCL-33A.

● Wiring example 1

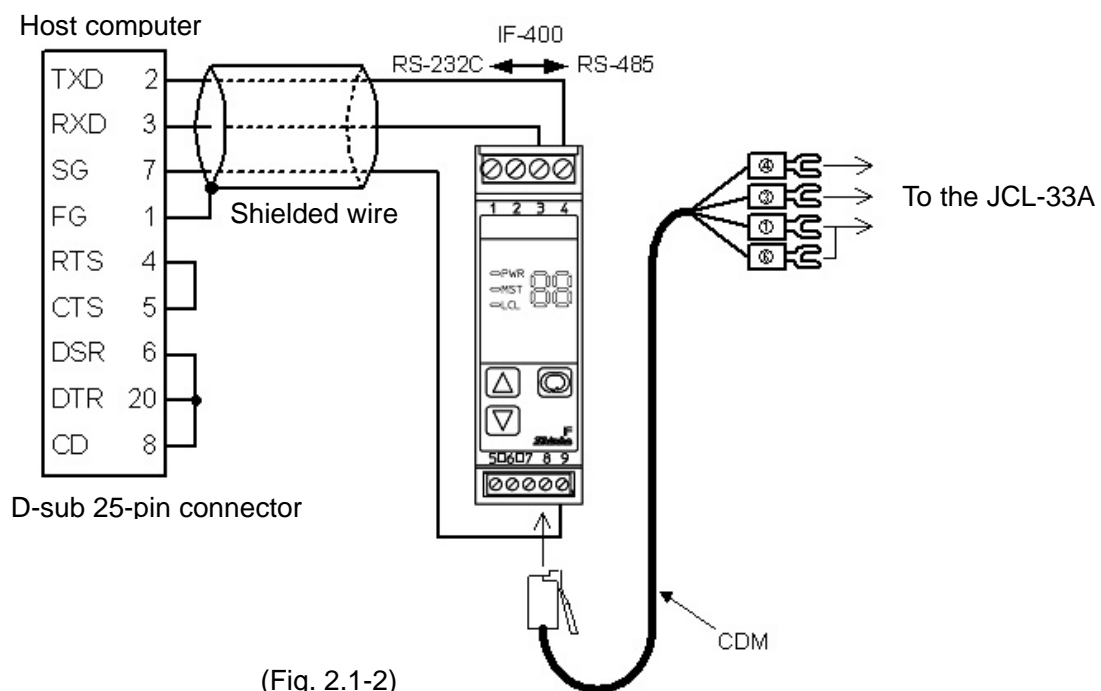
When the IF-400 is used as a communication converter, a maximum of 31 units of the JCL-33A can be connected.

[When using D-sub 9-pin connector]



(Fig. 2.1-1)

[When using D-sub 25-pin connector]



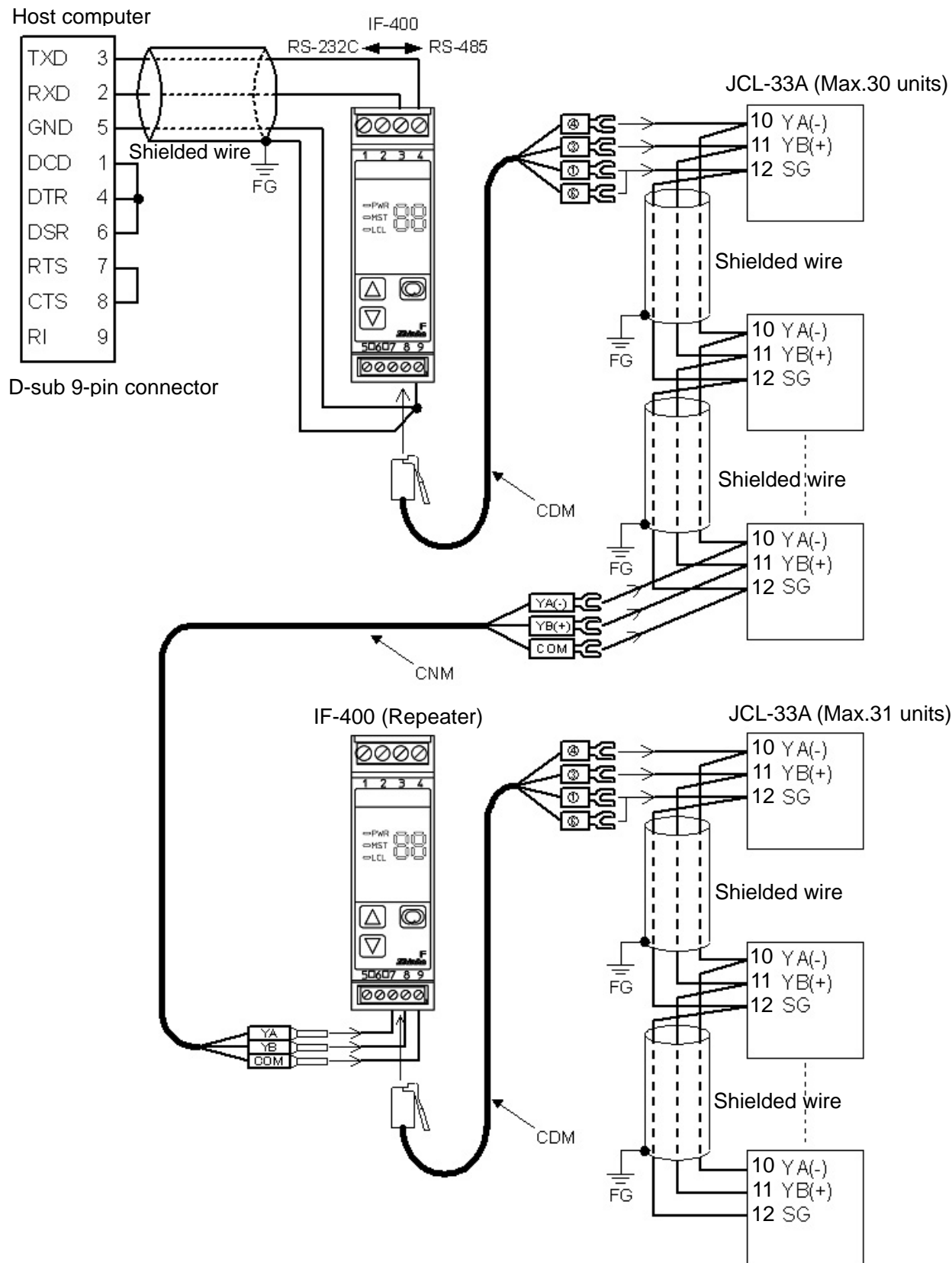
● Wiring example 2

When the IF-400 is used as a repeater, more than 32 units of the JCL-33A can be connected.

Communication line can be extended more than 1.2km.

Up to 2 units of repeater can be used, therefore, up to 80 units of controllers can be connected.

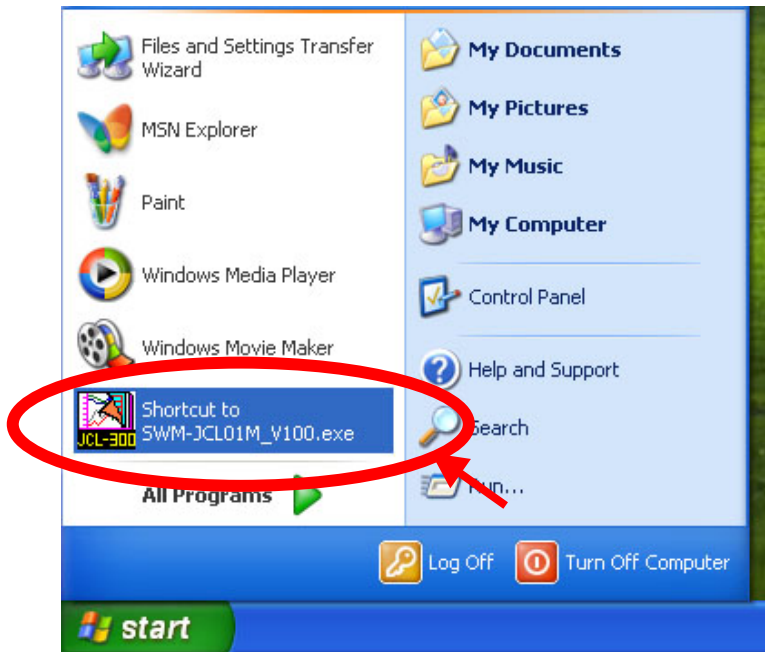
(Communication line: Max. 3.6km)



(Fig. 2.1-3)

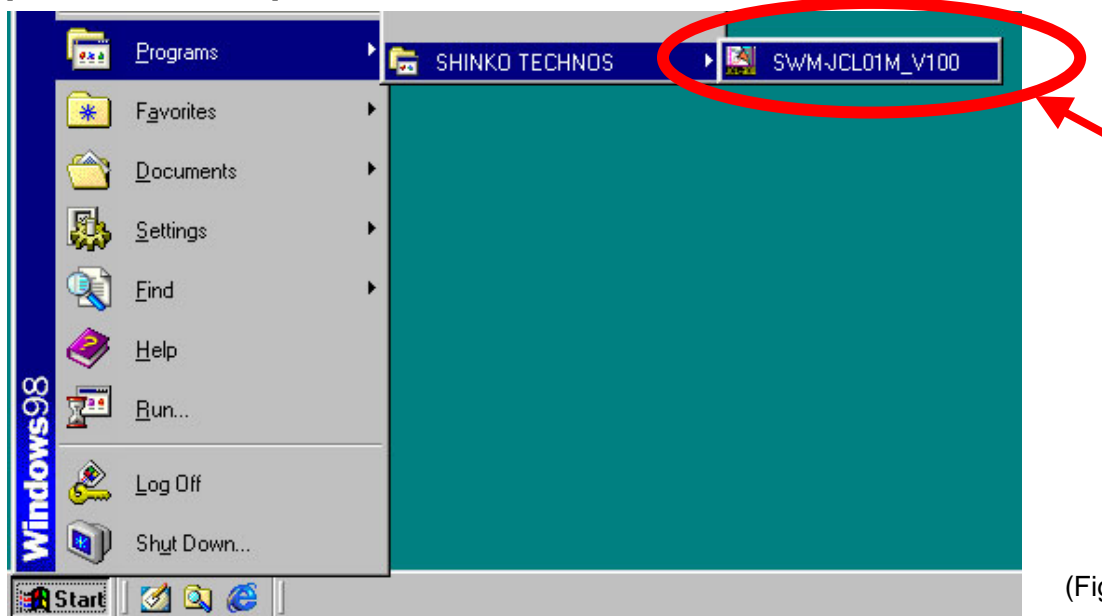
2.2 Starting the monitoring software

- (1) Confirm that the communication cable has been connected to communication port of the personal computer.
For Windows 2000/XP, select [Shortcut to SWM-JCL01M_Vxxx.exe], and click.



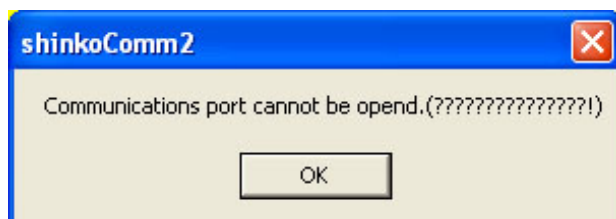
(Fig. 2.2-1)

For Windows 98/NT4.0/Me, select [Programs] on the start menu – [SHINKO TECHNOS] – [SWM-JCL01M_Vxxx] and click.

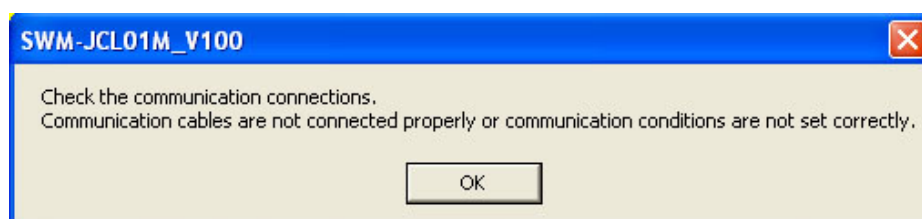


(Fig. 2.2-2)

If communication cable is not connected, the following displays appear. (Fig 2.2-3) and (Fig 2.2-4).
After checking the connection, click [OK], referring to Section “2.1 Wiring between a personal computer and JCL-33A”.



(Fig 2.2-3)



(Fig 2.2-4)

(2) The monitoring software opening display will appear, and JCL-33A data will be read (Fig 2.2-5).

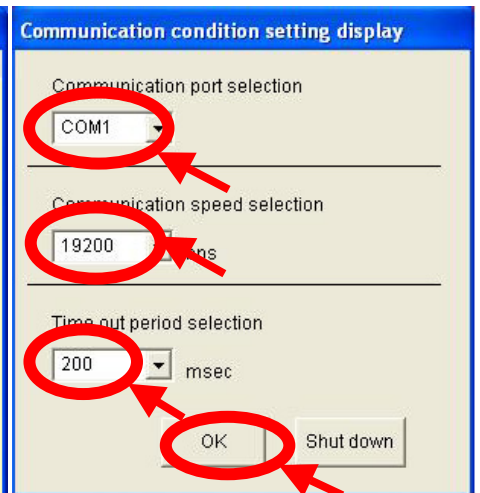
When Communication condition setting display appears, select the communication port, speed and Timeout period, then click [OK] (Fig 2.2-6).

In case the JCL-33A does not respond after receiving commands from this software, the maximum waiting time of response is the Timeout period.

Default: Communication port: COM1, Communication speed: 9600bps, Timeout period: 200msec



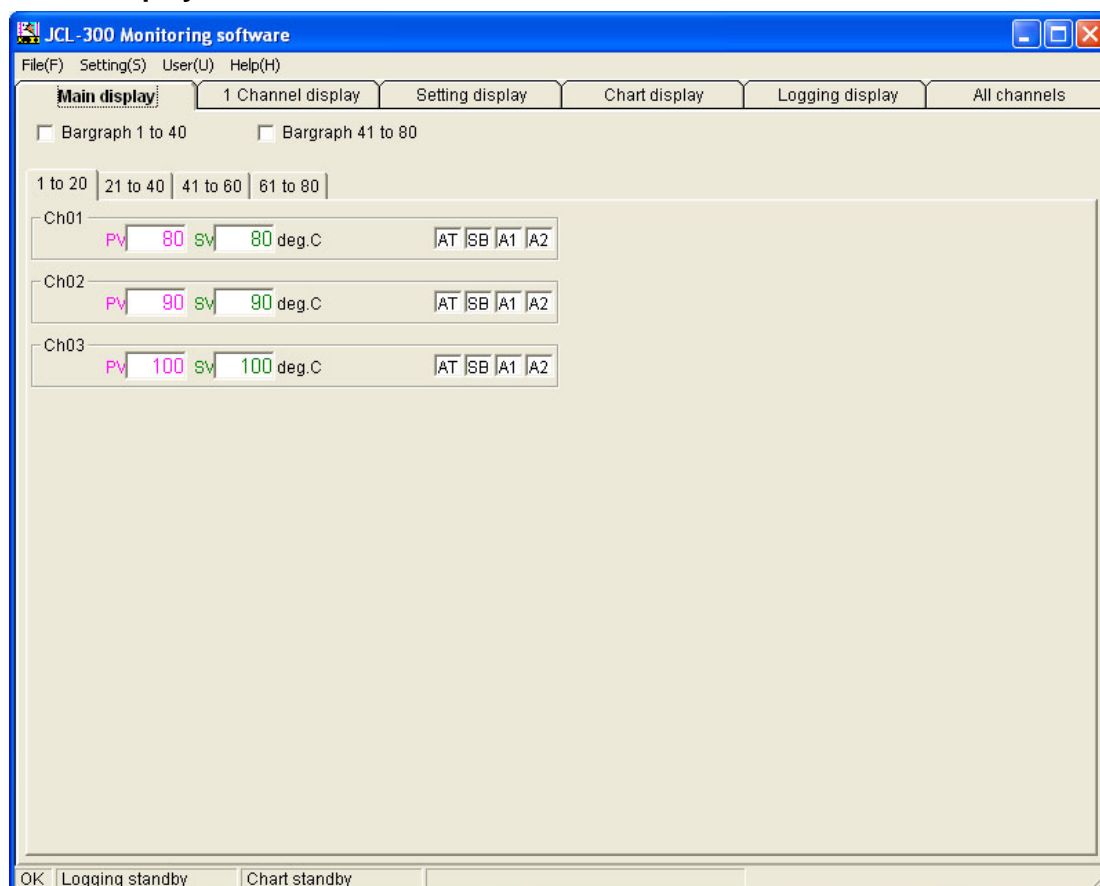
(Fig. 2.2-5)



(Fig. 2.2-6)

(3) The monitoring software will start.

Main display



(Fig. 2.2-7)

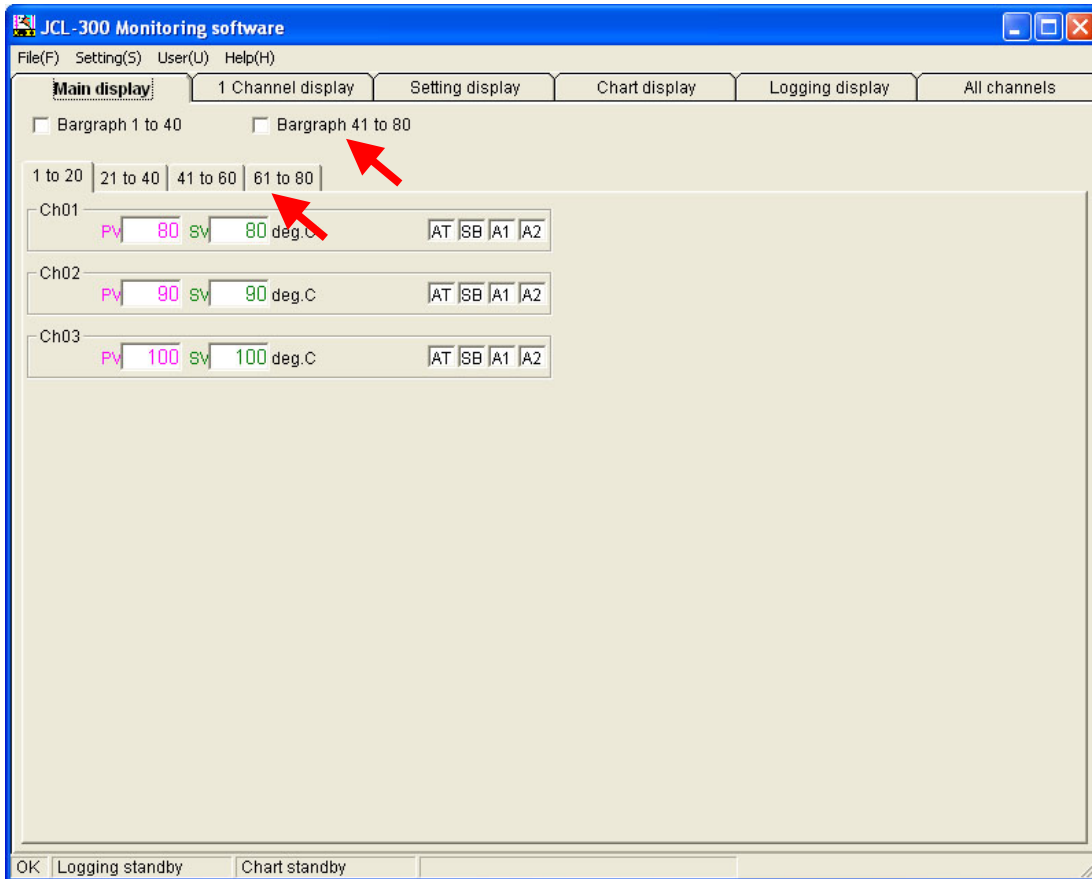
2.3 Displays and operation of the monitoring software

2.3.1 Displays

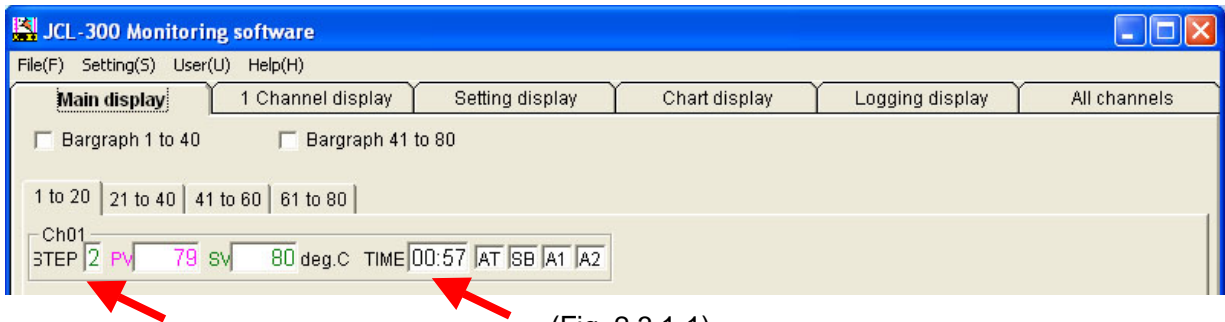
Displays can be changed by clicking the tab.

(1) Main display

PV, SV, Auto-tuning, Sensor burnout alarm and Alarm status of the units for up to 80 channels can be monitored every 20 channels. Only the connected units are indicated



For program control, step number (STEP) and step time (TIME) are indicated in addition to the above.



(Fig. 2.3.1-1)

Operation explanation

By clicking the following tab, 20 channels can be switched at a time.

Nothing will be indicated for the JCL-33A which is not connected.

[1 to 20] tab : Data for the instrument numbered 0 to 19 is indicated.

[21 to 40] tab : Data for the instrument numbered 20 to 39 is indicated.

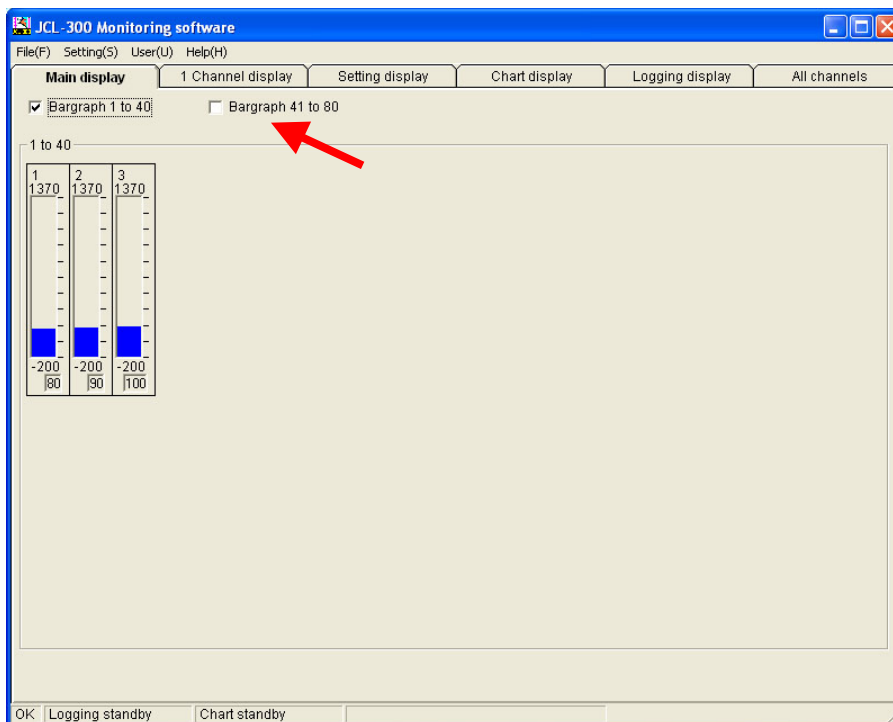
[41 to 60] tab : Data for the instrument numbered 40 to 59 is indicated.

[61 to 80] tab : Data for the instrument numbered 60 to 79 is indicated.

☐ Bar graph 1 to 40 : If ☐ is clicked (☒) , the bar graph screen for the instrument numbered 0 to 39 appears.

☐ Bar graph 41 to 80 : If ☐ is clicked (☒) , the bar graph screen for the instrument numbered 40 to 79 appears.

Bar graph display



(Fig. 2.3.1-2)

The following items are described in the bar graph from the top:

Channel number, scaling high limit value, bar graph, scaling low limit value, PV

Bar graph color

Blue: Normal status

Red : If any alarm listed below is activated, the bar graph color turns to red.

(Alarm 1, Alarm 2, Sensor burnout alarm, Overscale, Underscale)

After the alarm is released, the bar graph color turns from red to blue.

Operation explanation

If ☐ is clicked (☒), the display for 40 channels can be switched.

☒ Bar graph 1 to 40 : If ☐ is clicked (☒), the bar graph screen for the instrument numbered 0 to 39 appears.

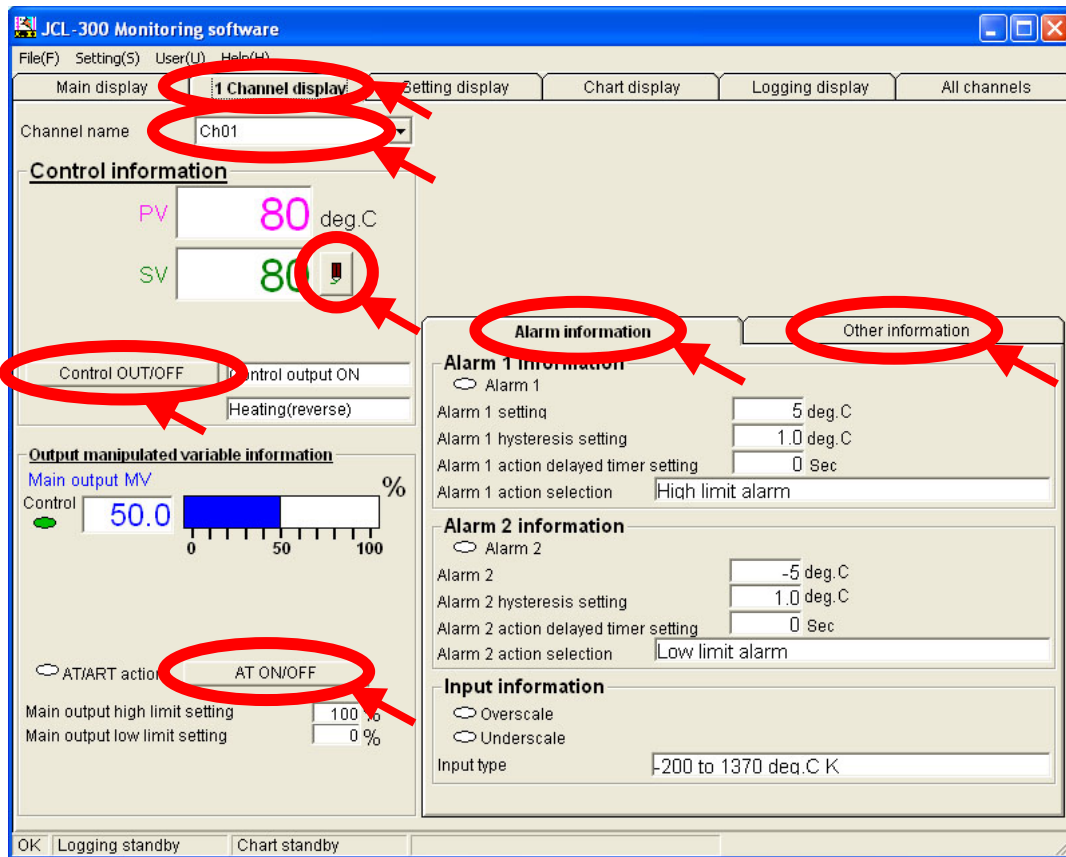
☒ Bar graph 41 to 80 : If ☐ is clicked (☒), the bar graph screen for the instrument numbered 40 to 79 appears.

If ☒ is clicked, the check is released (☐), and the main display appears.

(2) 1 channel display

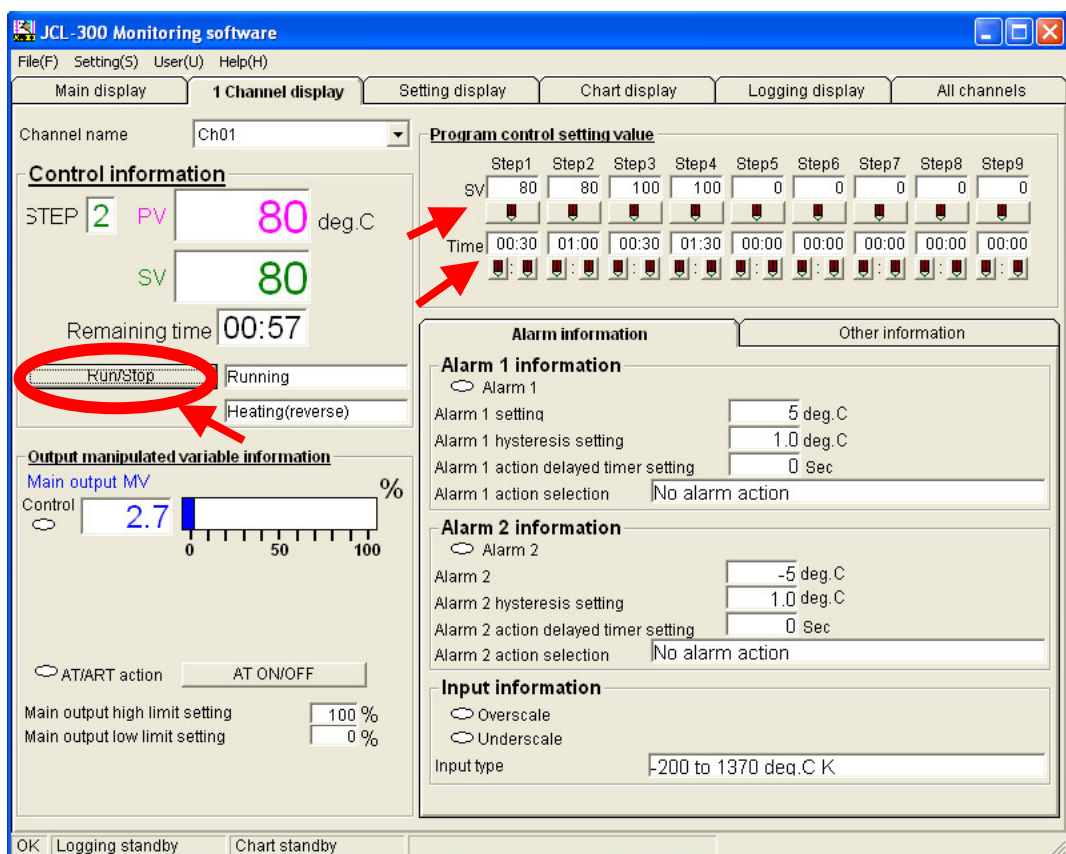
One unit selected during channel name selection can be monitored.

The indicated button differs depending on OUT/OFF key function selection of the JCL-33A (selected by keypad). If control output OUT/OFF function (fixed value control) is selected, the [Control OUT/OFF] button is indicated.



(Fig. 2.3.1-3)

If program control function is selected, the [RUN/STOP] button and program control set value are indicated.



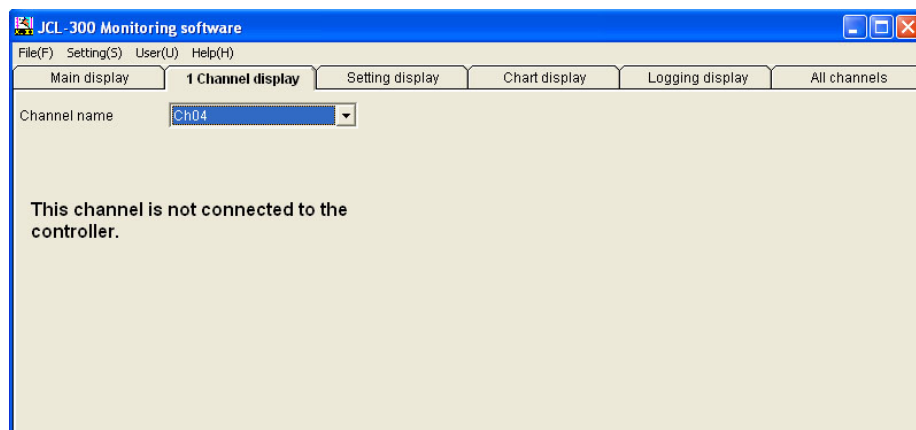
(Fig. 2.3.1-4)

Operation explanation

[Channel name]

: Select a desired channel name to be indicated by clicking the ▼ button.

If the channel of the disconnected unit is selected, the message “This channel is not connected to the controller.” will appear.



(Fig.2.3.1-5)



[SV setting] button

: By clicking this button, onscreen numerical keyboard appears. Input SV and click [OK].

[Control OUT/OFF] button

: If this button is clicked during control performance, control output OFF function initiates and all outputs are turned OFF.

If this button is clicked again, the control output OFF function is released, and the controller returns to control performance status.

[AT ON/OFF] button

: If this button is clicked, auto-tuning is performed.

If this button is clicked again, auto-tuning is cancelled.

[Alarm information] tab

: Indicates information on Alarm 1, Alarm 2 and input information.

[Other information] tab

: Indicates information on control parameter, sensor correction value, etc.

[RUN/STOP] button

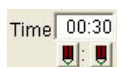
: If this button is clicked during program control standby mode, program control starts.

If the button is clicked again, program control stops.



[SV setting] button

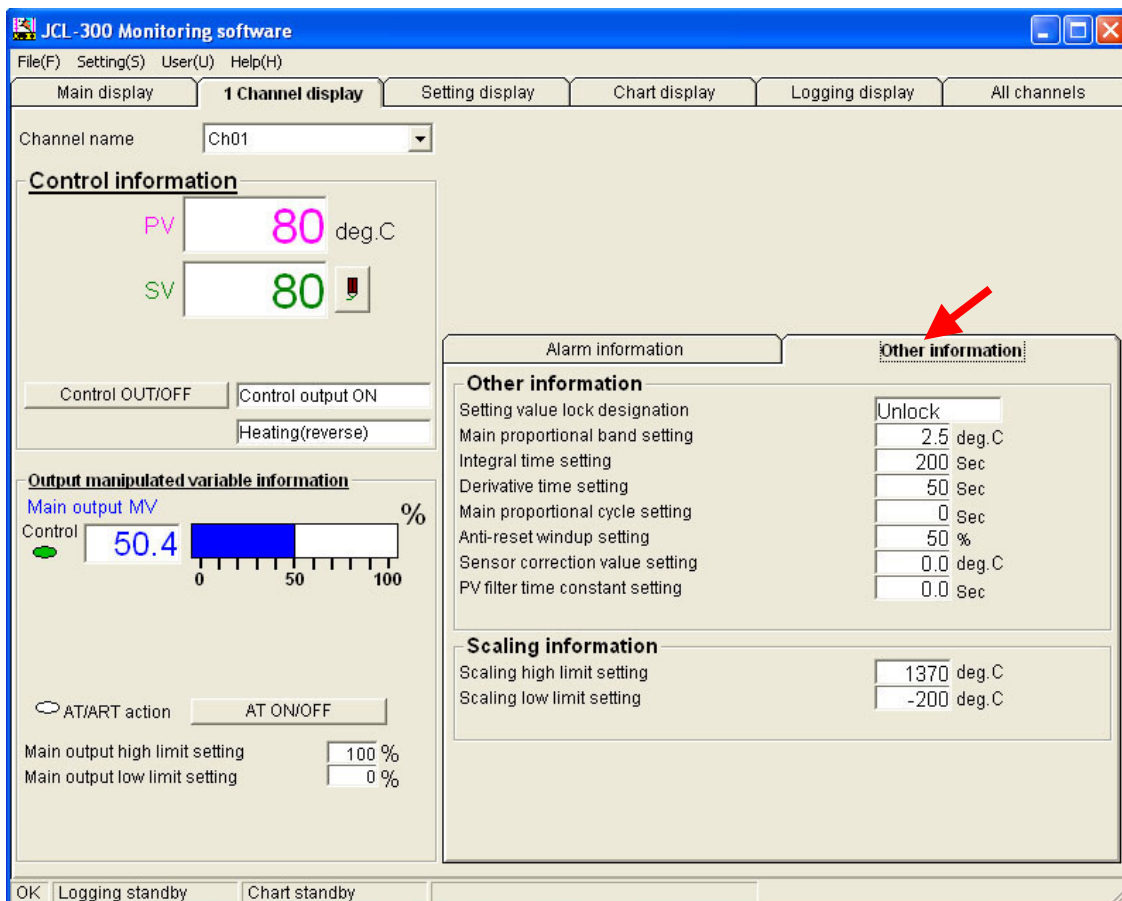
: By clicking this button, onscreen numerical keyboard appears. Input the step SV, and click [OK].



[Time setting] button

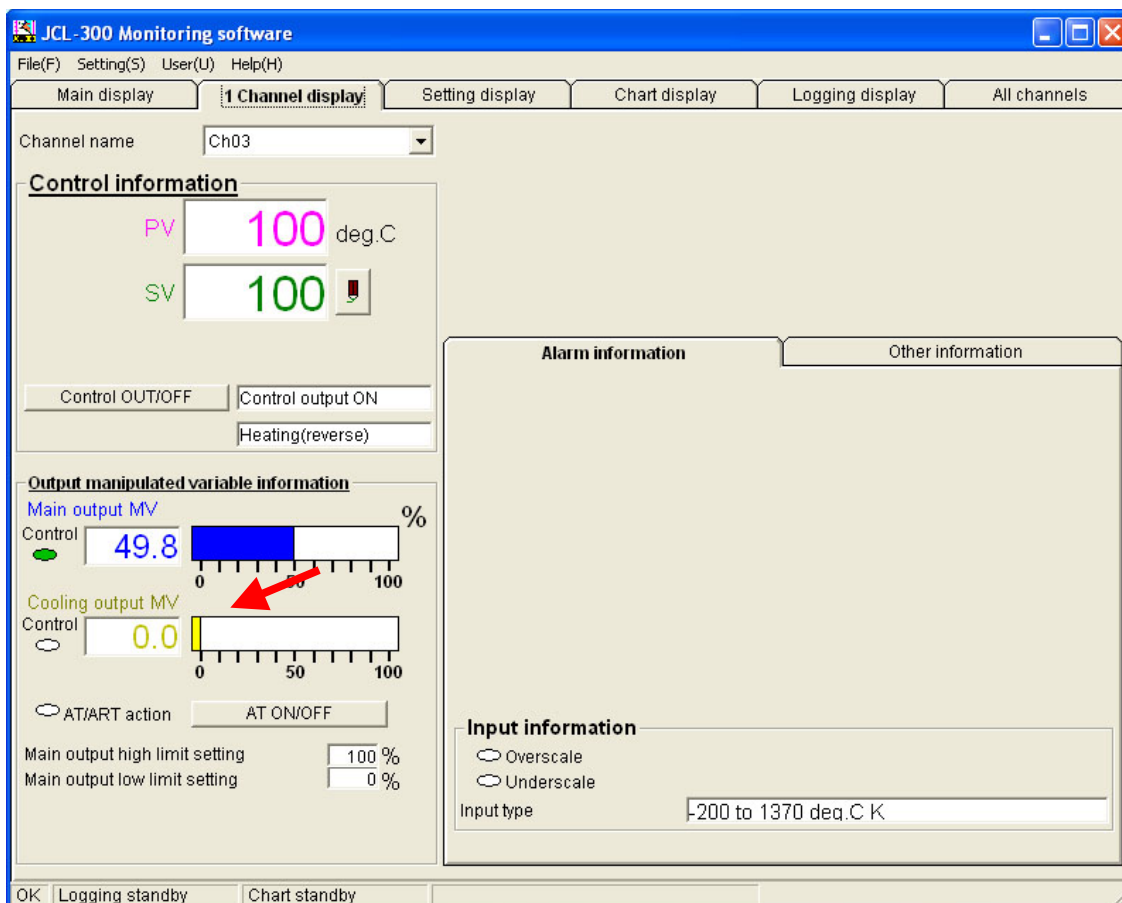
: By clicking this button, onscreen numerical keyboard appears. Input the step time (Hour:Minute or Minute:Second), and click [OK].

When [Other information] tab is clicked, control parameters, sensor correction value, etc. are indicated.



(Fig.2.3.1-6)

If Heating/Cooling control (DR option) is applied, cooling output MV is indicated.

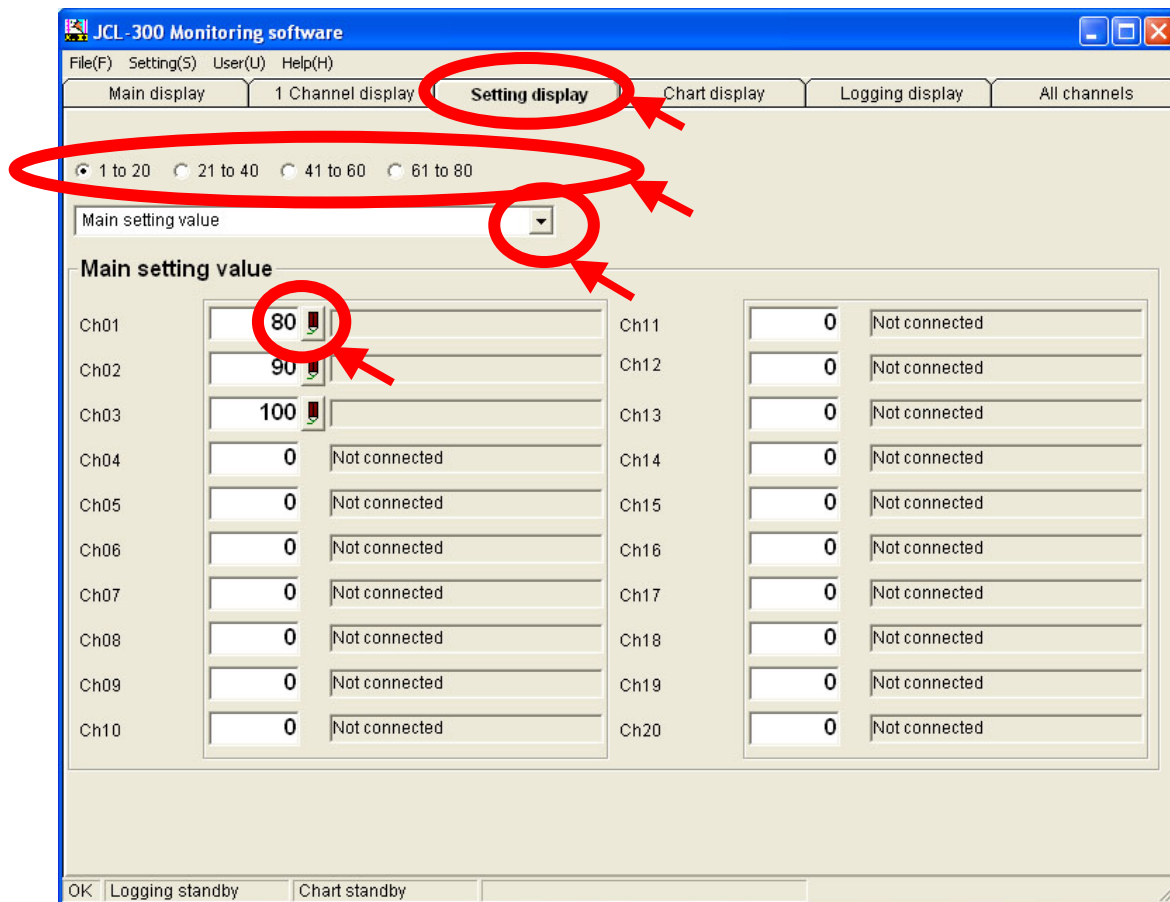


(Fig.2.3.1-7)

(3) Setting display

Sets set values for each of the 20 channels.

For the channel to which the JCL-33A is not connected, "Not connected" is indicated.




(Fig. 2.3.1-8)

Operation explanation


- ☒ 1 to 20 : If ☒ is clicked (☒), the set values of the instrument numbered 0 to 19 are indicated.
- ☐ 21 to 40 : If ☐ is clicked (☐), the set values of the instrument numbered 20 to 39 are indicated.
- ☐ 41 to 60 : If ☐ is clicked (☐), the set values of the instrument numbered 40 to 59 are indicated.
- ☐ 61 to 80 : If ☐ is clicked (☐), the set values of the instrument numbered 60 to 79 are indicated.

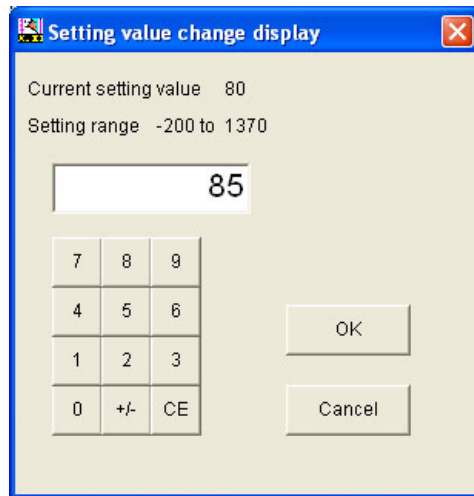
[Setting item selection]: Select the desired item to be set by clicking the ▼ button.

 [Setting] button : By clicking this button, onscreen numerical keyboard or selection screen appears. Input a setting value or make a selection, then click [OK].

- **Setting value change display** (numeric value setting)

- (e.g.) **Main setting value (SV) change**

Select the Main setting value from the [Setting item selection], then click the  [Setting] button. The Setting value change display will appear.



(Fig. 2.3.1-9)

Setting method

Current SV and setting range are indicated on the Setting value change display.

Input SV from onscreen numerical keyboard or PC keyboard, then click [OK].

The decimal point is automatically indicated for the setting item with a decimal point.

(e.g.) To set the value to 5.0, input 50.


Pressing the [+/-] button makes the symbol (+/-) reverse.

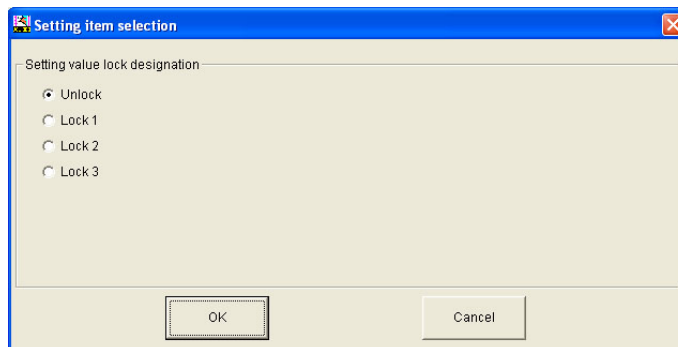
(e.g.) To set the value to -100, input 100 and [+/-].

The [CE] button clears the value.

- **Setting item selection display**

- (e.g.) **Setting value lock selection**

Select the Setting value lock designation from the [Setting item selection], then click the  [Setting] button. The Setting item selection display will appear.




(Fig. 2.3.1-10)

Selection method

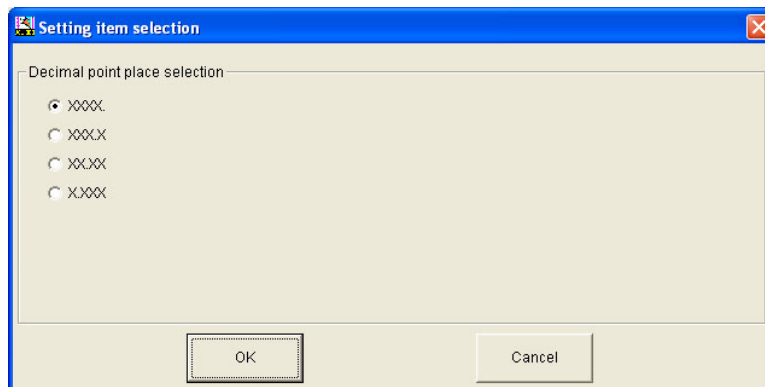
Select a lock type, and click [OK].

- (e.g.) **Decimal point place selection**

Select the Decimal point place selection from the [Setting item selection], then click the  [Setting] button.

The Setting item selection display will appear.

This display is available only for DC input.




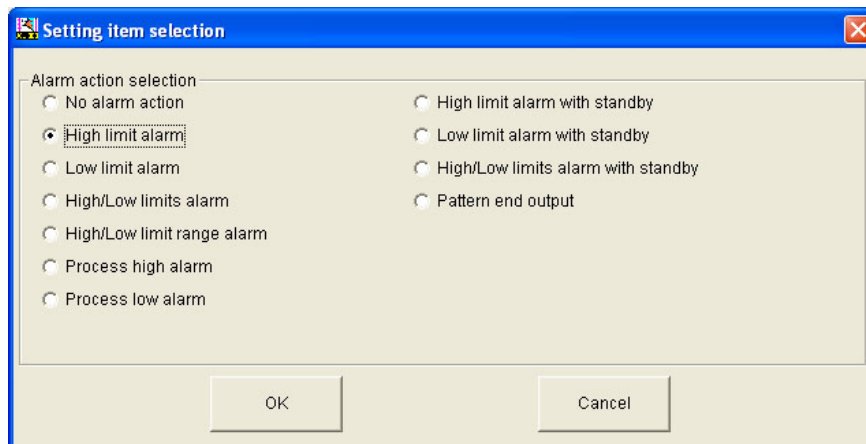
(Fig. 2.3.1-11)

Selection method

Select a decimal point place, and click [OK].

(e.g.) **Alarm 1 action selection**

Select the Alarm 1 action selection from the [Setting item selection], then click the  [Setting] button. The Setting item selection display will appear.



(Fig. 2.3.1-12)

Selection method


Select an alarm action, and click [OK].

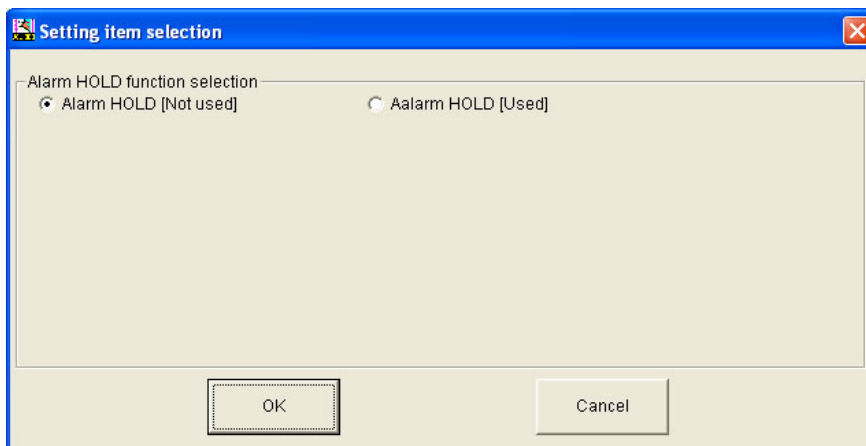


Caution

If the alarm action is changed, the alarm value becomes 0 (zero).
Therefore, be sure to reset the value.

(e.g.) **Alarm hold function selection**

Select the Alarm hold function selection from the [Setting item selection], then click the  [Setting] button. The Setting item selection display will appear.




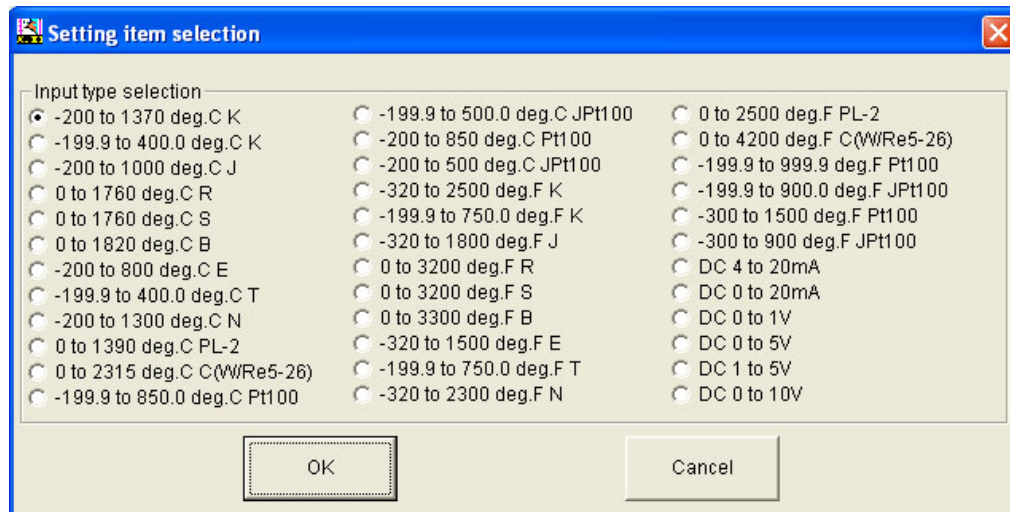
(Fig.2.3.1-13)

Selection method

Select either A1 (A2) alarm action [Holding] or [Not holding], and click [OK].

(e.g.) **Input type selection**

Select the Input type selection from the [Setting item selection], and then click the  [Setting] button. The Setting item selection display will appear.



(Fig.2.3.1-14)

Selection method


Select an input type, and click [OK].

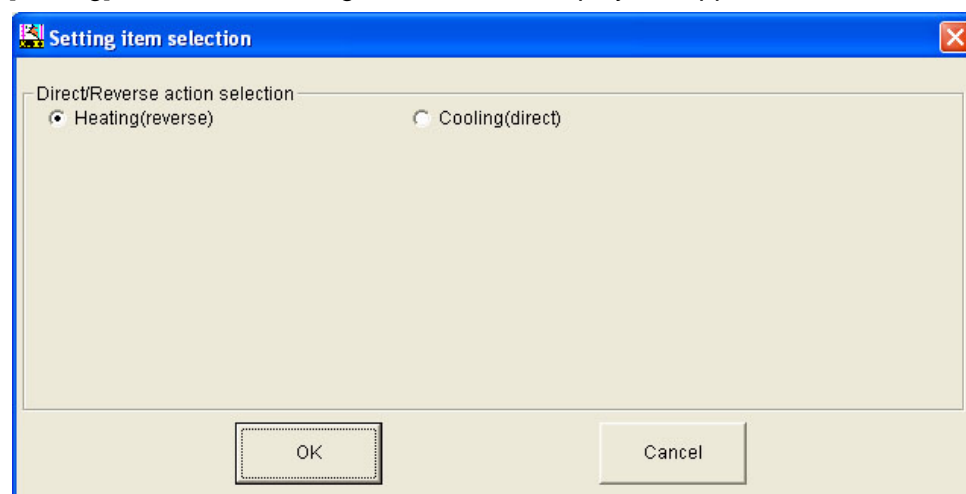


Caution

- When changing the input from DC voltage to other inputs, remove the sensor connected to the instrument first, then change for the input. If the input is changed with the sensor connected, the input circuit may break.
- If the input type is changed, Main setting value (SV), Alarm1, Alarm2, Scaling high limit and Scaling low limit value are initialized.

(e.g.) **Direct/Reverse action selection**

Select the Direct/Reverse action selection from the [Setting item selection], and then click the  [Setting] button. The Setting item selection display will appear.



(Fig.2.3.1-15)

Selection method

Select either Heating (Reverse) action or Cooling (Direct) action, and click [OK].

- **Action selection display**

- (e.g.) **Auto-tuning Perform/Cancel**

Select Auto-tuning from the [Setting item selection], then Action selection display will appear.
For the program control, control OUT/OFF button of the channel will not be indicated.



(Fig.2.3.1-16)

Display explanation

When the control output is on, a green lamp lights, and when control output is turned off, the green lamp goes off.

When auto-tuning is performing, a yellow lamp lights, and when it is cancelled, the yellow lamp goes off.

Selection method

[Control OUT/OFF] button: By clicking this button during control performance, control output OFF function initiates, and all outputs are turned OFF. When this button is clicked again, control output OFF function is released, then the instrument reverts to control performance status.

[AT ON/OFF] button : By clicking this button, auto-tuning is performed.
By clicking this button again, auto-tuning is cancelled.

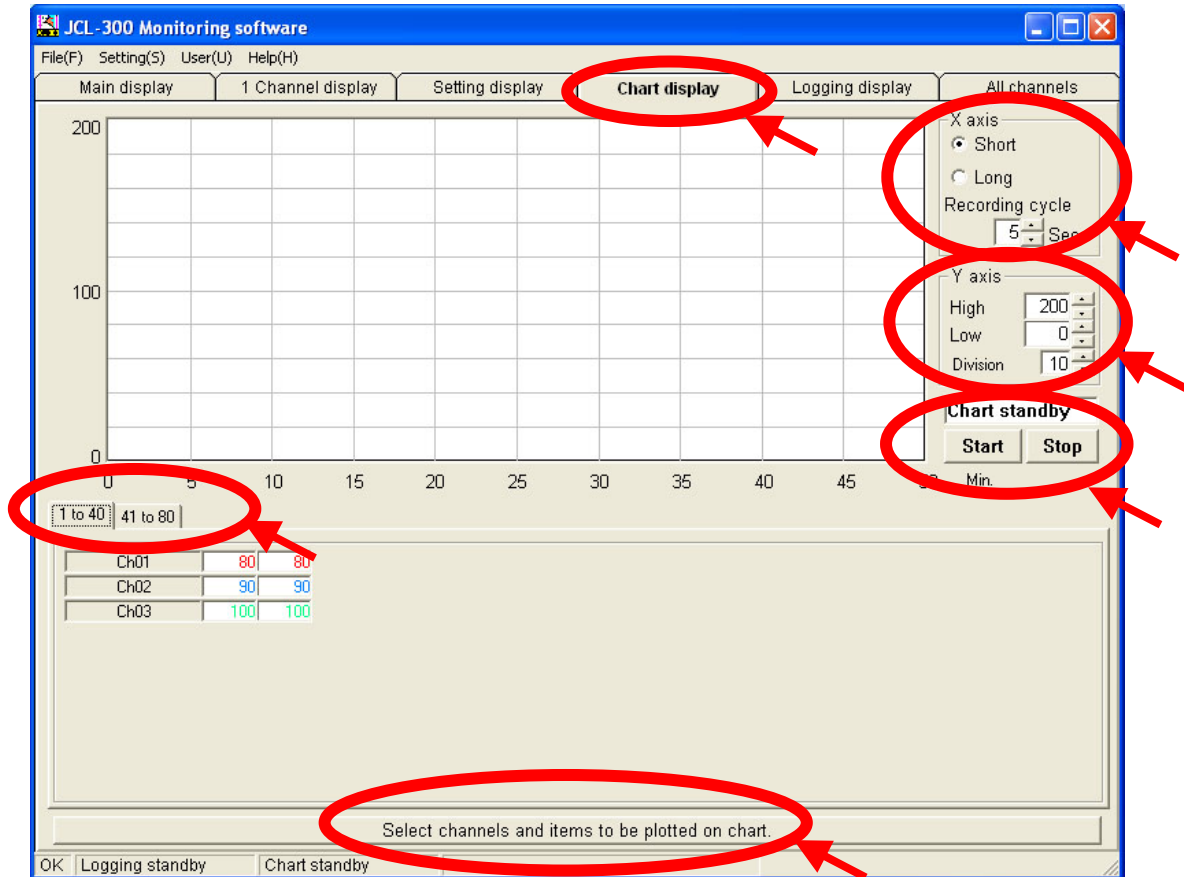
(4) Chart display

The chart can be plotted. A maximum of 80 points can be plotted out of PV and SV.

Unless chart plot conditions are set, chart plotting cannot be started.

If chart plotting starts again after it is cancelled, the chart screen is cleared, and the new chart is plotted again.

If the monitoring software is closed during chart plotting, the chart plotting automatically starts the next time the monitoring software starts.



(Fig. 2.3.1-17)

Operation explanation

[X axis]: Select the number of samples, and set the recording cycle (1 to 60 sec.).

(e.g.) The number of samples: Short (600)

Recording cycle: 5 sec.

3000 seconds

X axis indication: 0 to 50 minutes.

[Y axis]: Set the high limit and low limit values of chart plotting and Y axis division.

[Start] button : Clicking this button starts chart plotting.

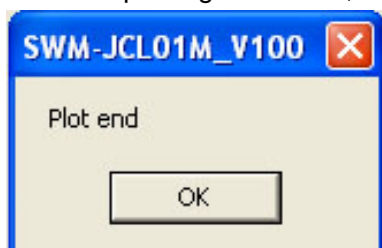
[Stop] button : Clicking this button stops chart plotting.

[1 to 40] tab : The JCL-33A data for the instrument numbered 0 to 39 is indicated.

[41 to 80] tab : The JCL-33A data for the instrument numbered 40 to 79 is indicated.

[Select channels and items to be plotted on chart] button: Clicking this button proceeds to the Chart plot condition setting display.

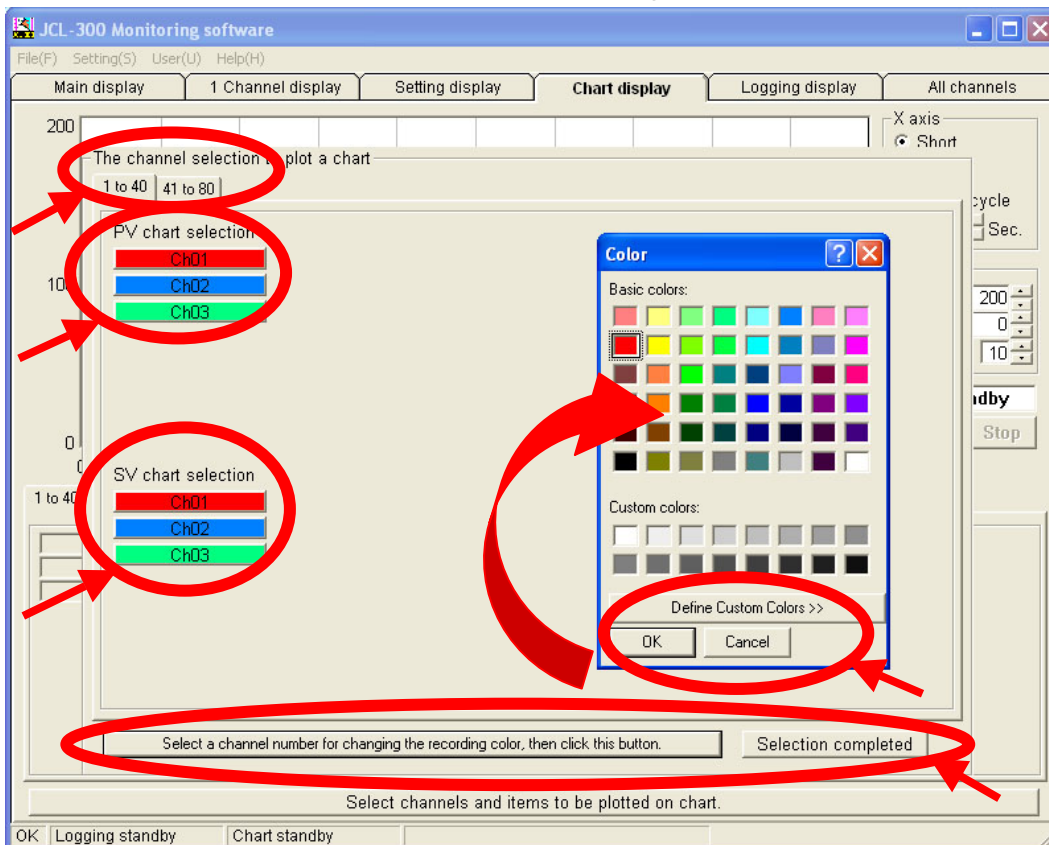
After chart plotting is finished, the following display appears.



(Fig. 2.3.1-18)

(5) Chart plot condition setting display

The plot conditions such as plotting item, channel number and chart color can be set. Unless chart plot conditions are set, the chart plotting cannot start.



(Fig. 2.3.1-19)

Operation explanation

[1 to 40] tab : Sets chart plot condition for the instrument numbered 0 to 39.

[41 to 80] tab : Sets chart plot condition for the instrument numbered 40 to 79.

[Chxx] button : Select a channel for plotting PV and SV.

[Select a channel number for changing the recording color, then click this button] button:
If this button is clicked, the Color selection display appears.

[Selection completed] button: If this button is clicked, the chart plot condition setting is completed, and the display reverts to the Chart display.

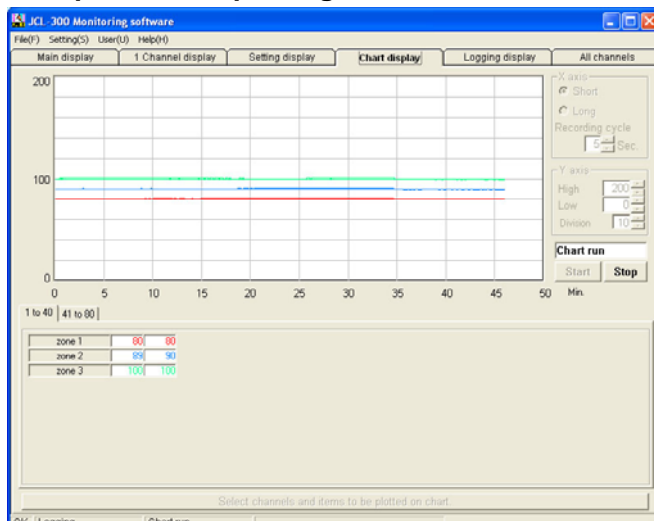
Color selection display

[Define Custom Colors]: User's own color can be created and added by clicking this button.

[OK] : Clicking this button sets the color and closes the display.

[Cancel] : This button closes the display without setting colors.

Example of chart plotting



(Fig. 2.3.1-20)

(6) Logging display

Data logging condition can be set.

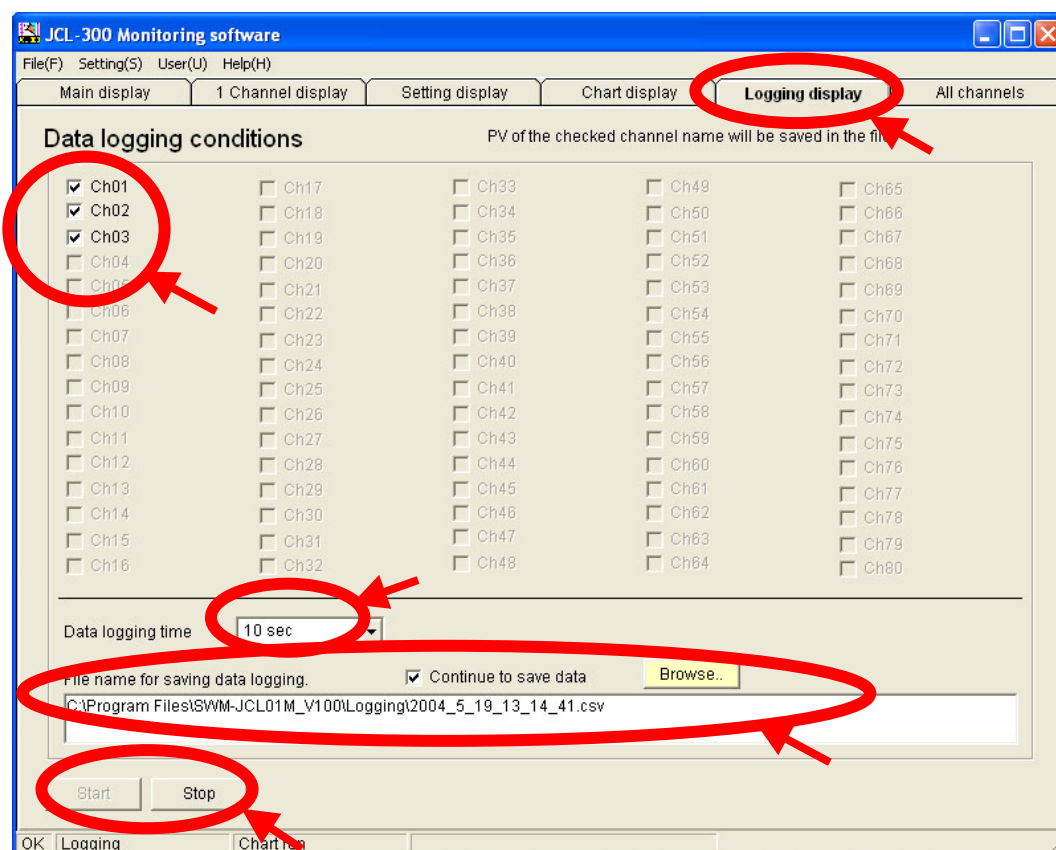
Unless data logging save destination is specified, logging cannot be started.

Press the [Browse] button and enter a file name for saving data.

However, if [Continue to save data] is checked, the file is automatically named by date and time (year, month, date, hour, minute, second.csv) of logging start, and data is saved in the logging folder of the installation folder.

By clicking the [Start] button, PV data of the selected channel is saved at intervals of data logging time.

The saved data can be edited on commercially available spreadsheet applications like Microsoft Excel.



(Fig.2.3.1-21)

Operation explanation

[Ch01 to 80] selection item : Select a channel by checking the box ☐ before the channel.

[Data logging time] : Select a data logging interval by clicking the ▼ button.

☐ Continue to save data : If data logging starts with the box checked ☒, the data is saved in the same previous file continuously.
If data logging starts with the check of the box released ☐, the data is saved in a new file.

[Browse...] button : To change the file name, click this button.
The dialog box [Open] is opened.
Select a file and click [Open].

[Start] button : Clicking this button starts data logging.

[Stop] button : Clicking this button stops data logging.

Logging auto-start when starting the monitoring software

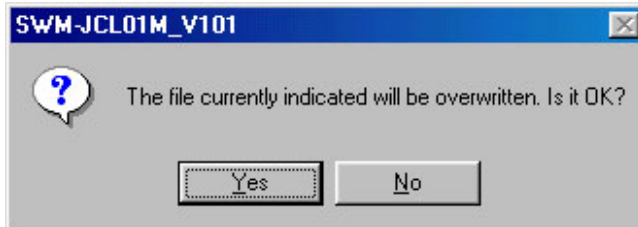
If the monitoring software is closed during data logging, logging starts automatically when the software starts. However, saving method in file differs depending on whether [Continue to save data] is checked or not.

When [Continue to save data] is checked

Data is saved in the same previous file continuously.

When [Continue to save data] is not checked

The following display will appear.



(Fig. 2.3.1-22)

If [Yes] is clicked, the same file used to save as previous session will be overwritten with the new logging data.

Notice

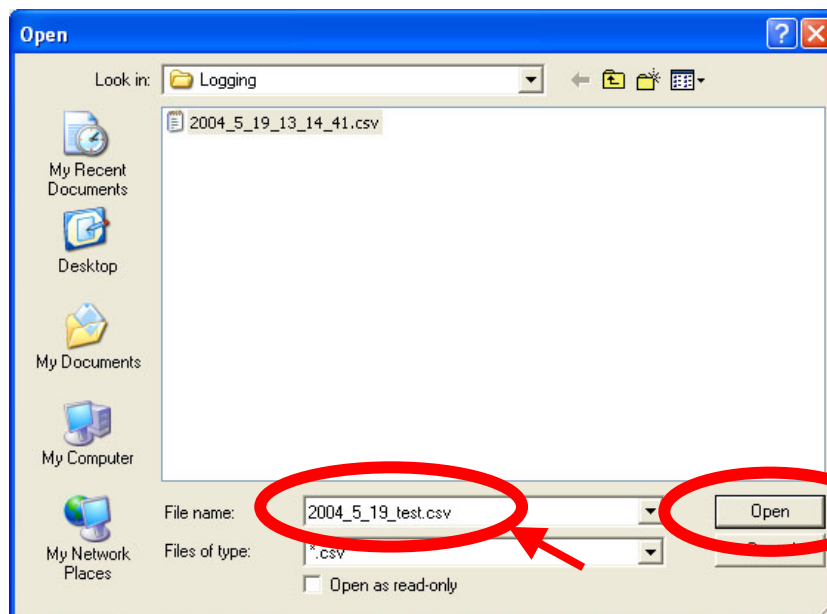
**If the file is overwritten, all the previous data is cleared.
Designate a new file if you don't want to clear the data.**

If [No] is clicked, the following display appears.



(Fig. 2.3.1-23)

If [OK] is clicked, the following display appears.



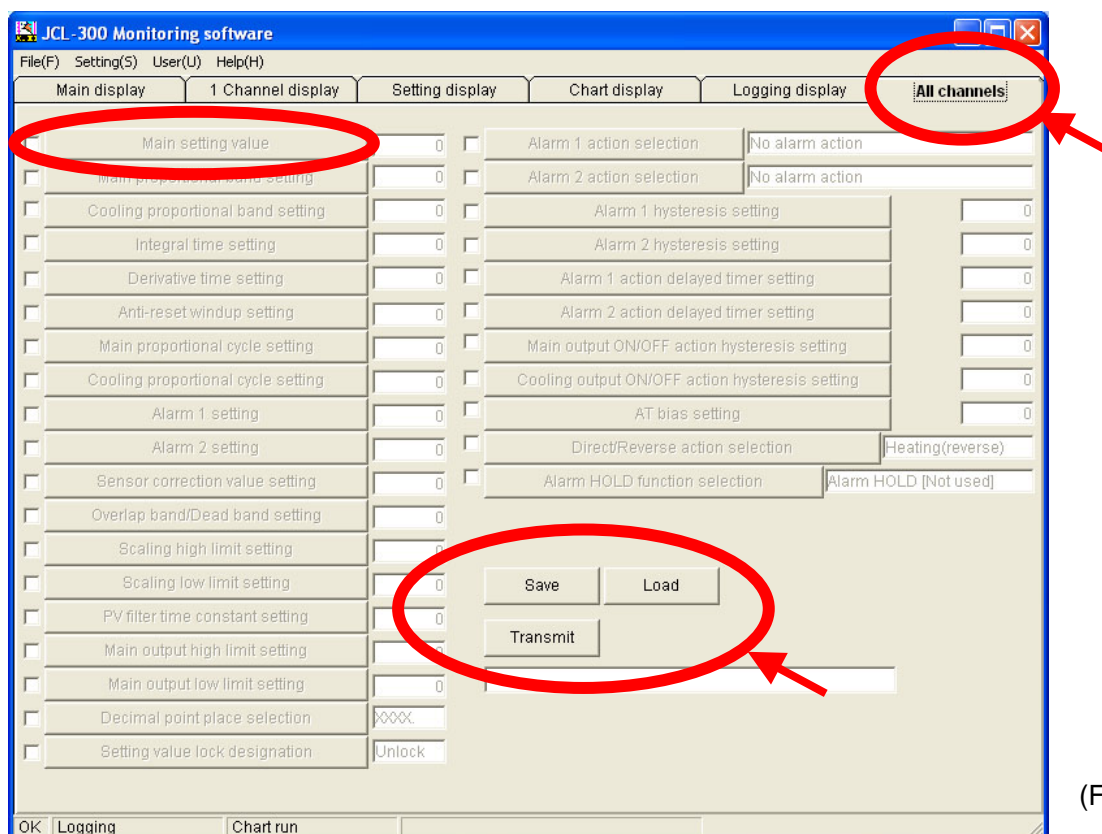
(Fig. 2.3.1-24)

Enter a new file name and Click [Open]. The data will be saved in the new file.

(7) All channels display

Data to transmit to all connected units can be set.

Setting value on the screen can be saved in a file or loaded (read) from a file.



(Fig. 2.3.1-25)

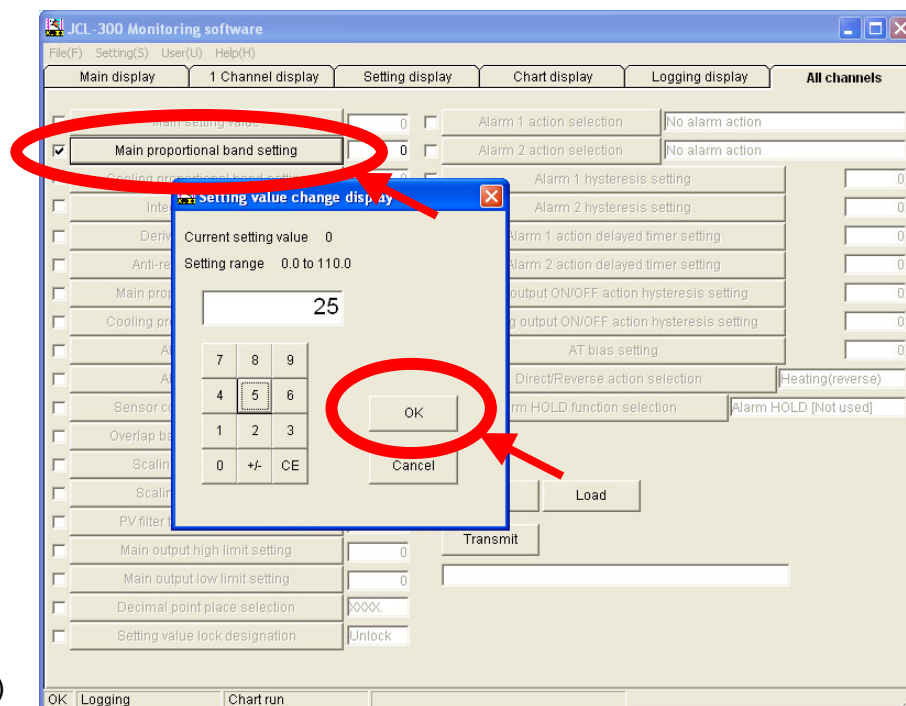
Operation explanation

☐ Each setting/selection item : Check the box ☐ to select the item for transmission.

By checking the box, each setting/selection item will take effect and the value can be set or selected.

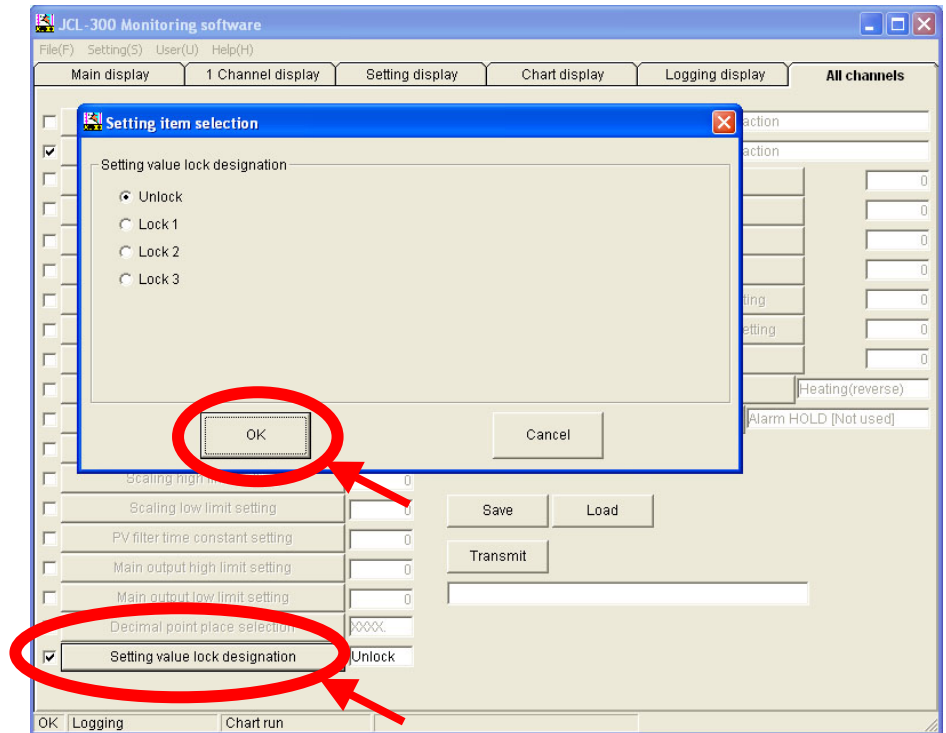
Each setting/selection button : By clicking this button, onscreen numerical keyboard or selection screen appears.

Input or select a set value and click [OK].



(Fig. 2.3.1-26)

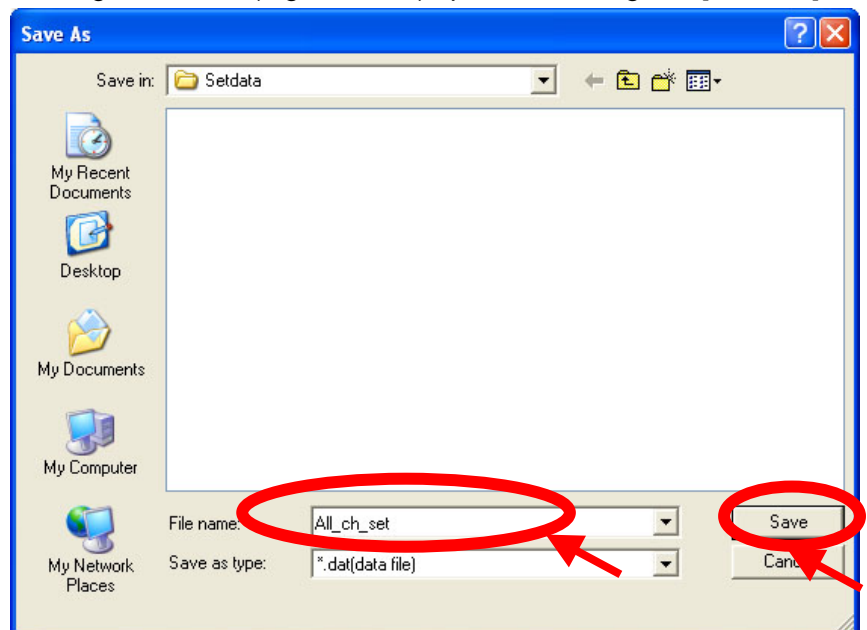
(e.g.) Onscreen numerical keyboard for Main proportional band setting



(Fig. 2.3.1-27) (e.g.) Screen for setting value lock designation

[Save] button

: Clicking this button (Fig. 2.3.1-25) opens the dialog box [Save As].



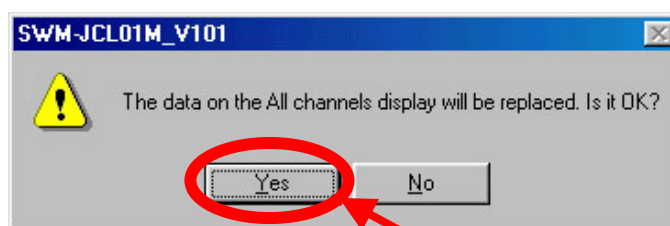
(Fig. 2.3.1-28)

Enter a file name and click [Save] button.

The data on the screen will be saved in a file of the "Setdata" folder in the installation folder.

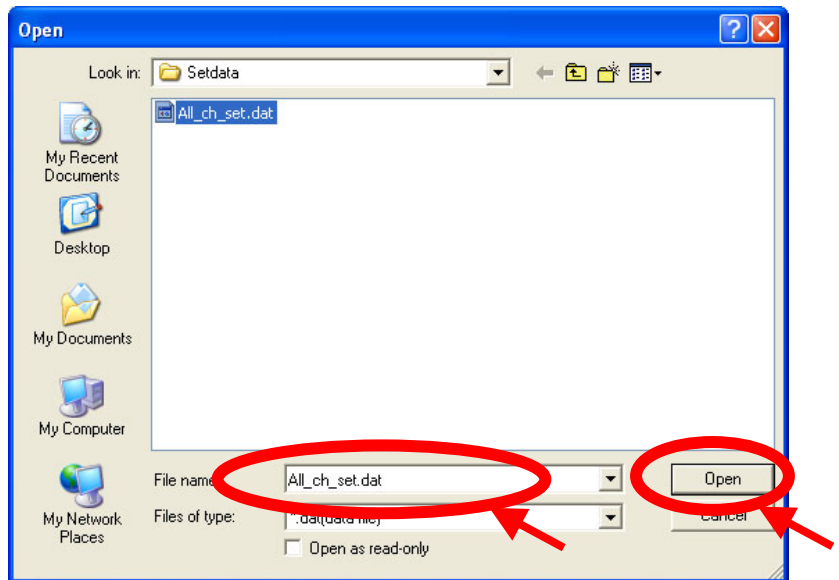
[Load] button

: If this button (Fig. 2.3.1-25) is clicked, the following dialogue box will appear.



(Fig. 2.3.1-29)

Clicking the [Yes] button opens the dialog box [Open] (Fig. 2.3.1-30).
Clicking the [No] button cancels loading, and closes the above screen.

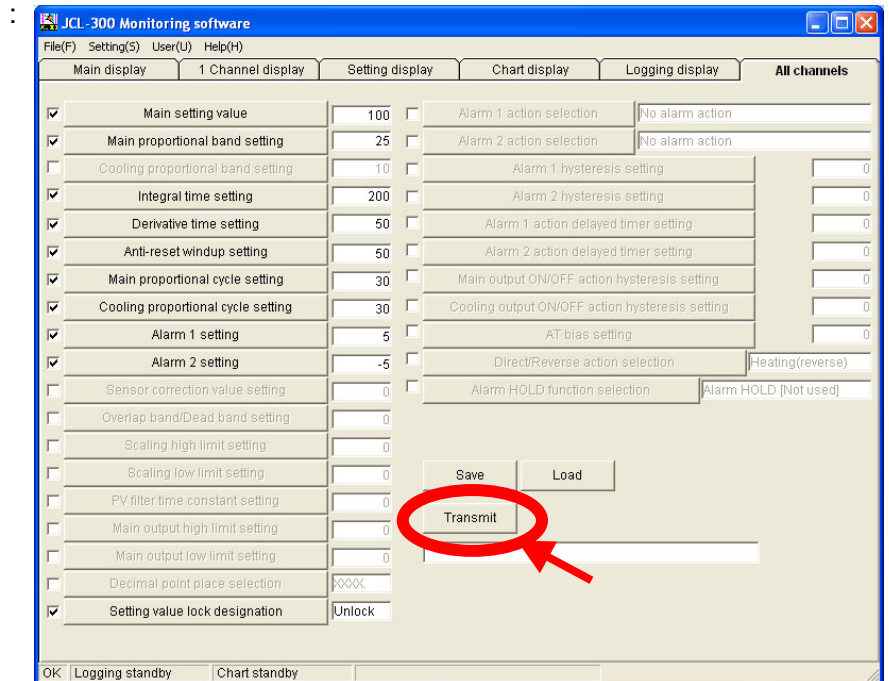


(Fig. 2.3.1-30)

Select a file and click [Open].

The data is read from the file and the screen indication is updated.

[Transmit] button



(Fig. 2.3.1-31)

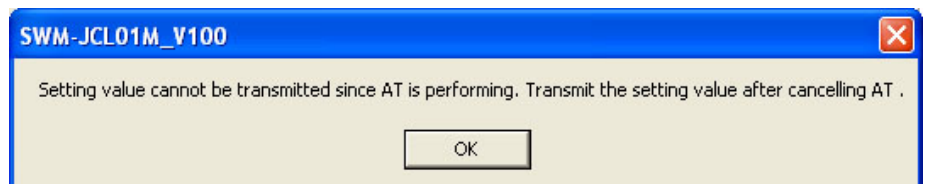
If the [Transmit] button is clicked, the following display appears.



(Fig. 2.3.1-32)

If [Yes] is clicked, data of all checked items are sent to all connected units. Unchecked item data will not be sent.

Even if the items are checked, they are not sent to the units which are performing AT (auto-tuning), and the following display appears.



(Fig. 2.3.1-33)

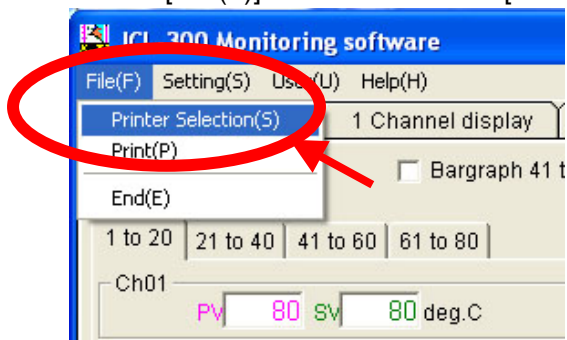
Clicking [No] button stops transmission (Fig. 2.3.1-32).

2.3.2 Menu bar operation

(1) Printer selection

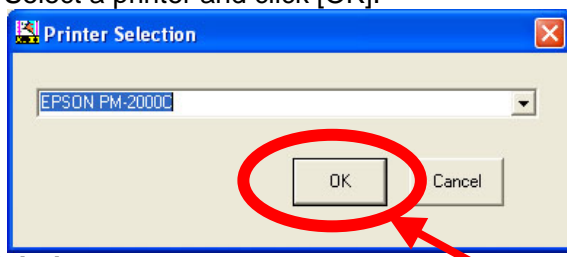
The printer for printing can be selected.

- ① Select [File(F)] on the menu bar – [Printer selection(S)], and click.



(Fig. 2.3.2-1)

- ② Printer selection display appears
Select a printer and click [OK].

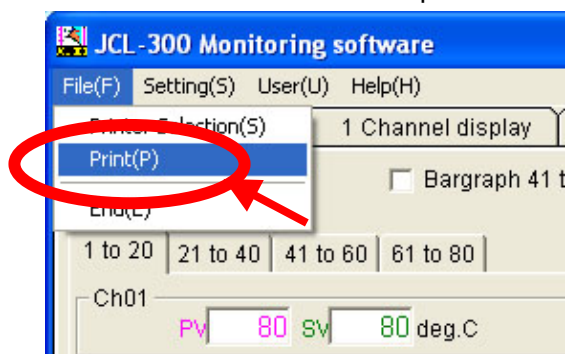


(Fig. 2.3.2-2)

(2) Printing

Contents on the screen can be printed.

- ① Select [File(F)] on the menu bar – [Print(P)], and click.
Contents on the screen will be printed.

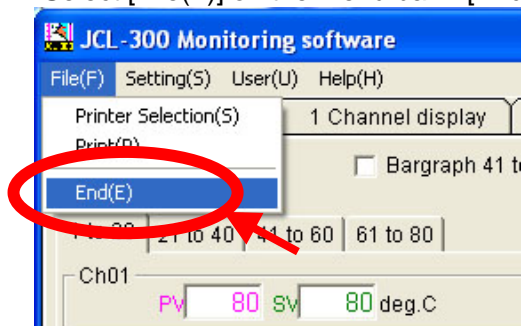


(Fig. 2.3.2-3)

(3) Terminating the monitoring software

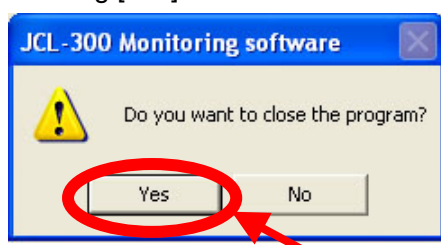
Terminate the monitoring software as follows.

- ① Select [File(F)] on the menu bar – [End(E)], and click.



(Fig. 2.3.2-4)

- ② Termination confirming screen appears.
Clicking [Yes] terminates the screen, and clicking [No] cancels termination.



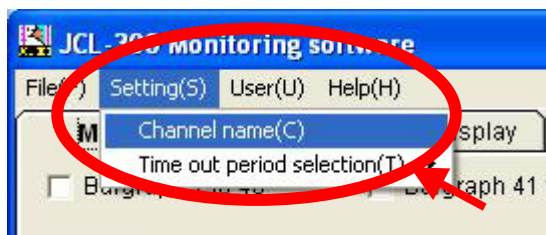
(Fig. 2.3.2-5)

(4) Channel name registration

Channel name indicated on the screen can be registered as follows.

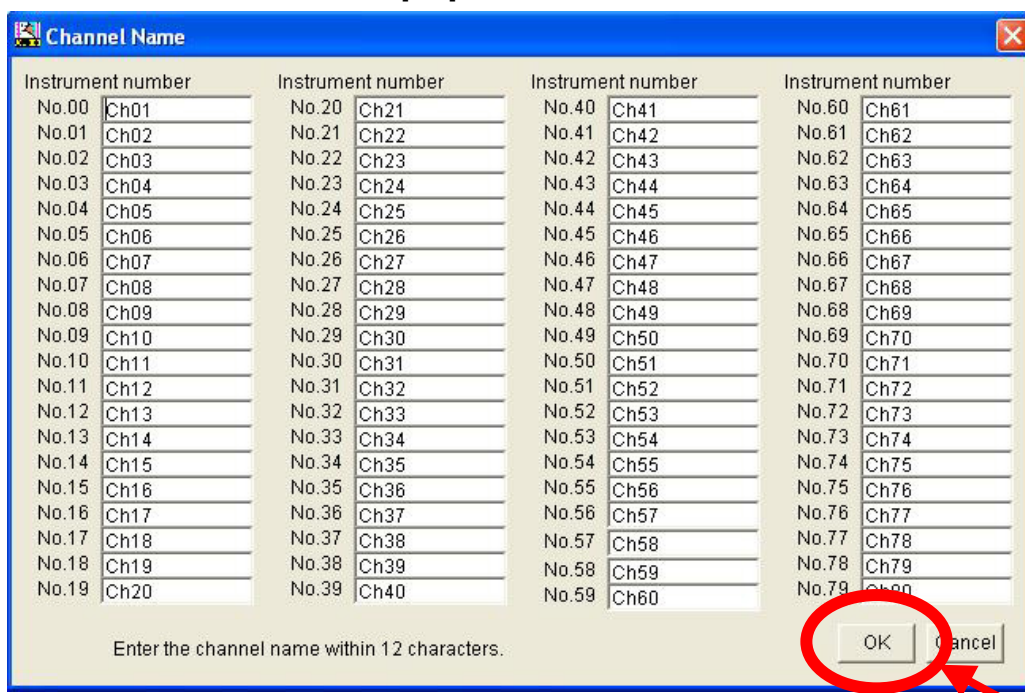
The registered channel name is indicated on the screen and in the selection list.

- ① Select [Setting(S)] on the menu bar – [Channel name(C)] and click.



(Fig. 2.3.2-6)

- ② Channel name registration screen appears.
Enter a channel name and click [OK].



(Fig. 2.3.2-7)

- ③ The following display appears. Click [OK].



(Fig. 2.3.2-8)

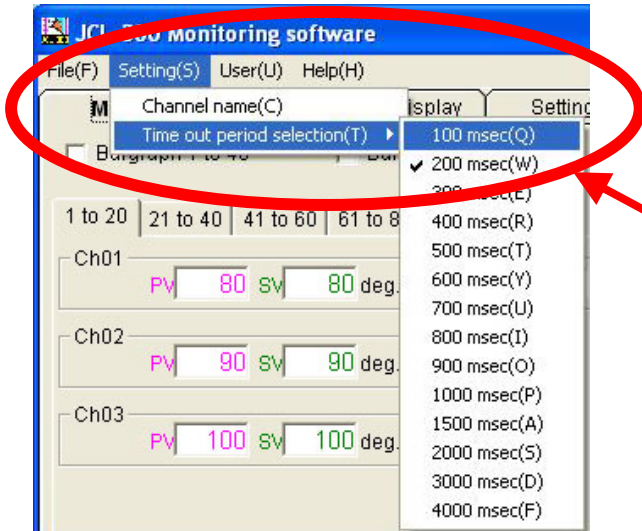
(5) Timeout period selection

Selects timeout period of the monitoring software.

In case the JCL-33A does not respond after receiving commands from this software, the maximum waiting time of response is the Timeout period.

Default value: 200msec

Select [Setting(S)] on the menu bar – [Timeout period selection(T)] – [Desired period], and click.

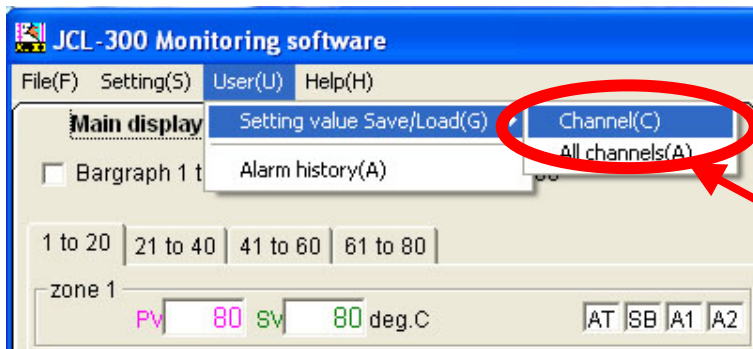


(Fig. 2.3.2-9)

(6) Setting value Save/Load per channel

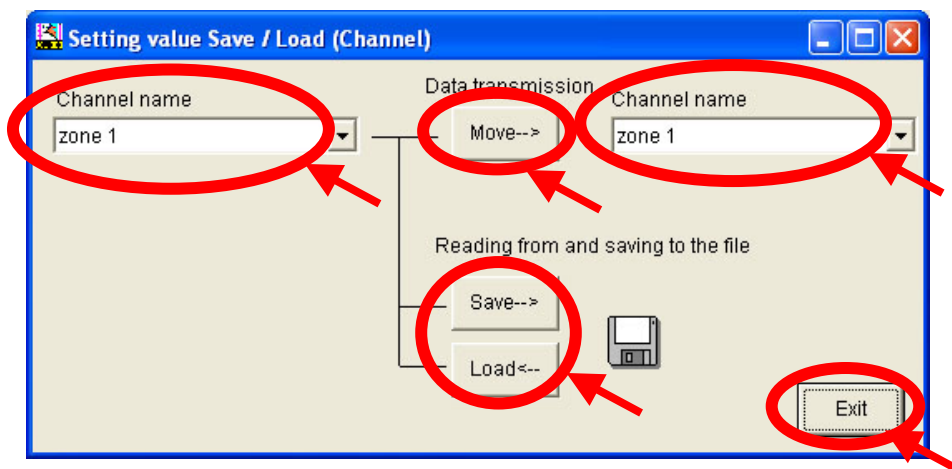
The setting values on the screen can be saved in a file or loaded (read) from files per channel. Data transmission between channels can be carried out.

- ① Select [User(U)] on the menu bar – [Setting value Save/Load(G)] – [Channel(C)], and click.



(Fig. 2.3.2-10)

- ② Setting value Save/Load per channel screen appears.



(Fig. 2.3.2-11)

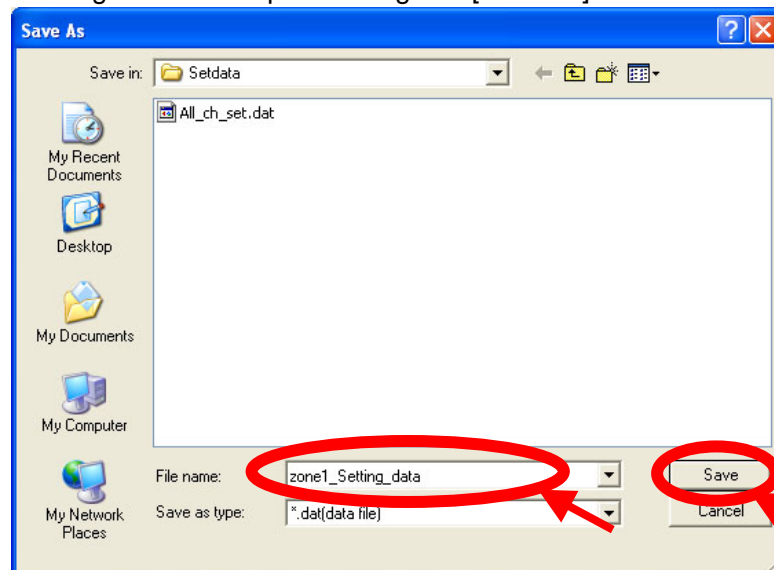
Operation explanation

Channel name : Select a channel name to save or to load.

To transmit data, select the channel name for transmission destination as well.

[Move-->] button: By clicking this button, the setting value is sent from the channel origin to the channel destination.

[Save-->] button : Clicking this button opens dialog box [Save As].

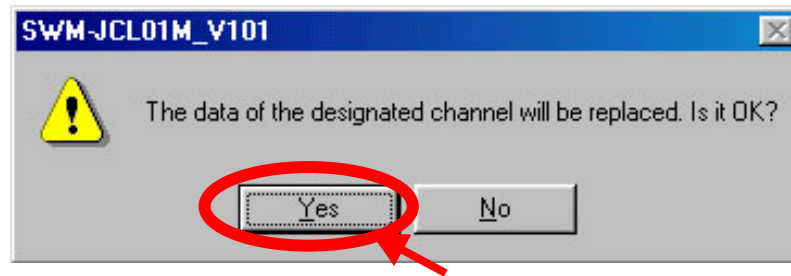


(Fig. 2.3.2-12)

Input a file name and click [Save].

The setting value of the selected channel is saved in a file of the "Setdata" folder in the installation folder.

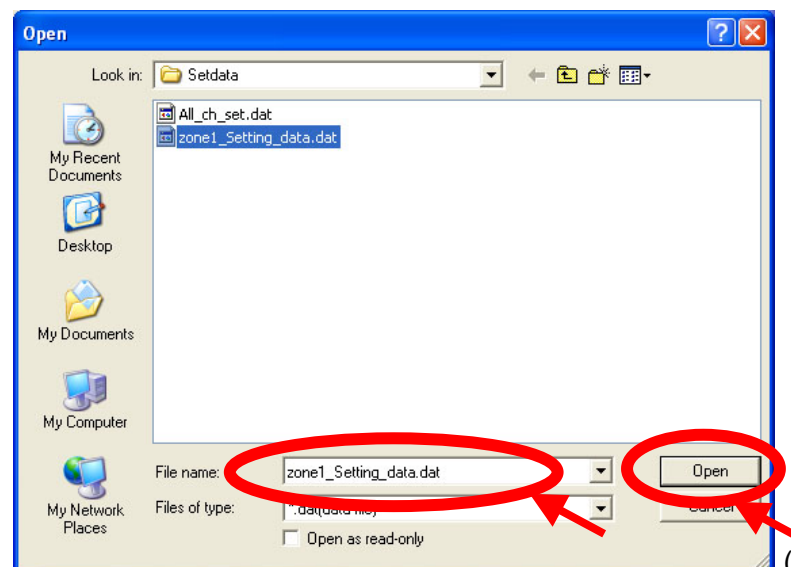
[<--Load] button : If this button is clicked, the following display appears.



(Fig. 2.3.2-13)

Clicking [Yes] opens the dialogue box [Open]. (Fig. 2.3.2-14)

Clicking [No] cancels loading, and closes the above screen.



(Fig. 2.3.2-14)

Select a file and click [Open].

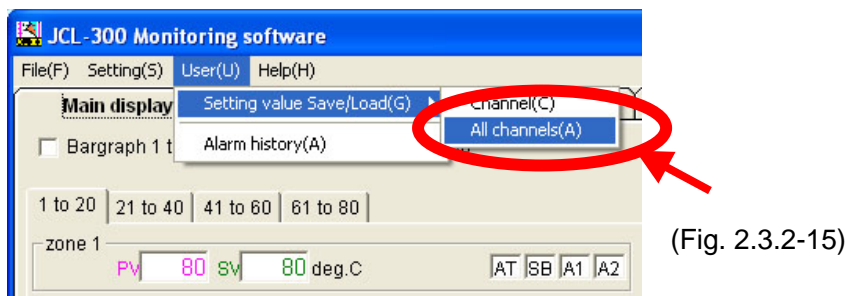
The data is loaded (read) from the file and the setting value of the selected channel is updated.

[Exit] button : Clicking this button (Fig.2.3.2-11) closes the screen of Setting value Save/Load per channel.

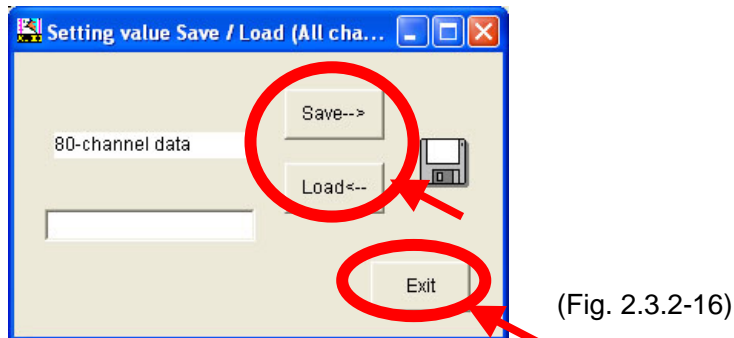
(7) Setting value Save/Load for all channels

The setting values of all channels can be saved in a file and loaded (read) from a file.

- ① Select [User(U)] on the menu bar – [Setting value Save/Load(G)] – [All channels(A)], and click.

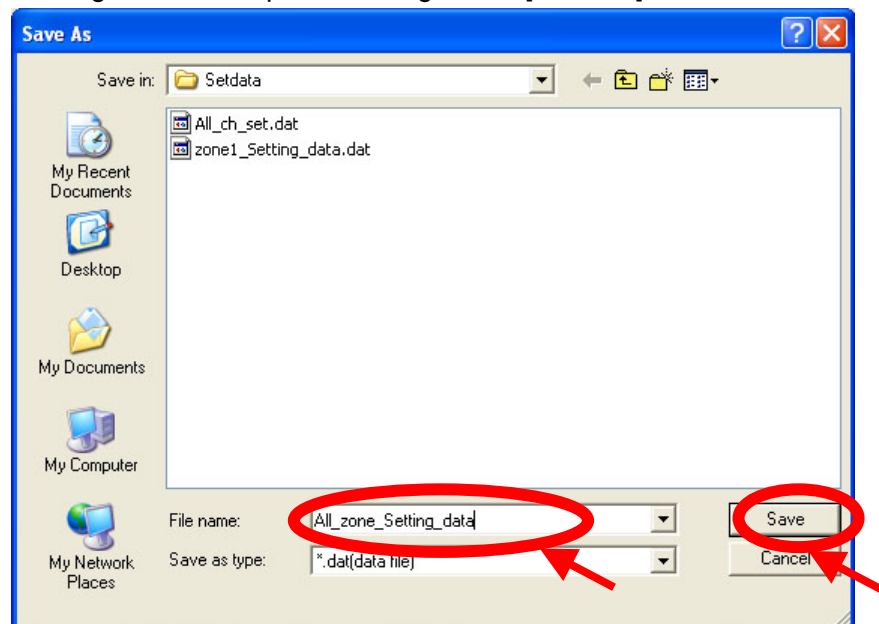


- ② Setting value Save/Load for all channels screen appears.



Operation explanation

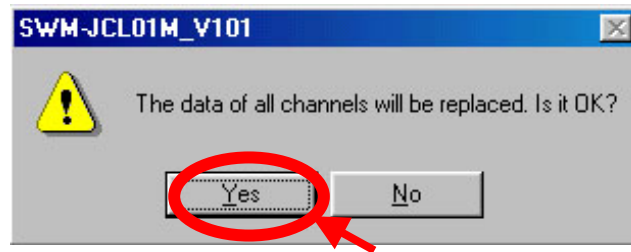
[Save-->] button : Clicking this button opens a dialogue box [Save As].



Enter a file name, and click [Save].

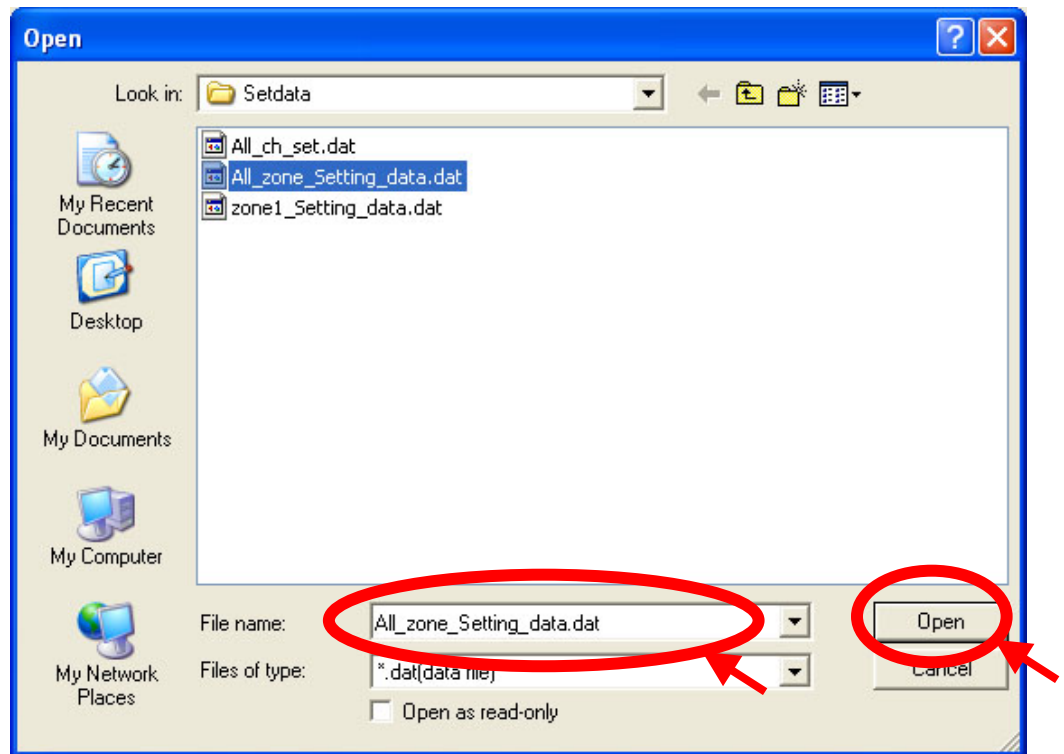
The setting values of all channels are saved in the file of "Setdata" folder of installation folder.

[<--Load] button : If this button is clicked, the following display appears.



(Fig. 2.3.2-18)

Clicking [Yes] opens a dialogue box [Open] (Fig. 2.3.2-19).
Clicking [No] cancels loading, and closes the above screen.



(Fig. 2.3.2-19)

Select a file, and click the [Open].
The data is loaded (read) from the file and the setting values of all channels are updated.

[Exit] button : Clicking this button (Fig.2.3.2-16) closes the screen of Setting value Save/Load for all channels.

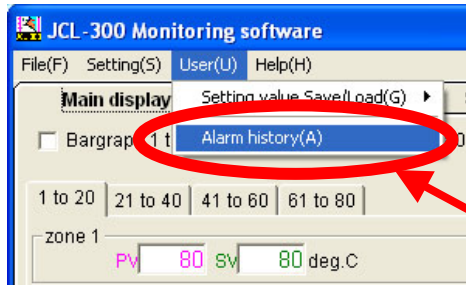
(8) Alarm history display

During monitoring, if Alarm 1 (A1), Alarm 2 (A2), Heater burnout alarm, Overscale or Underscale has occurred or if they have been restored, the channel name, date and time are indicated.

These are saved in the history folder with “txt” extension.

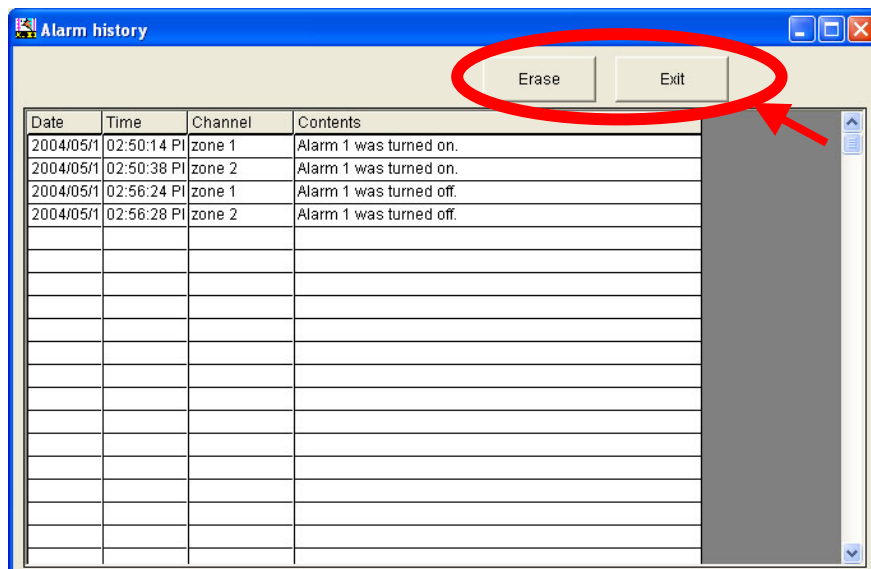
The file is automatically named by date and time when the monitoring software starts.

- ① Select [User(U)] on the menu bar – [Alarm history(A)], and click.



(Fig. 2.3.2-20)

- ② Alarm history display appears.



(Fig. 2.3.2-21)

Operation explanation

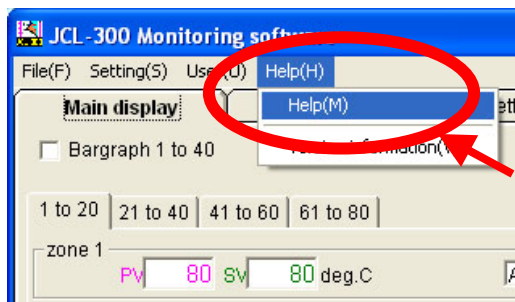
[Erase] button: Clicking this button clears the history data on the screen.

[Exit] button : Clicking this button closes the Alarm history display.

(9) Help display

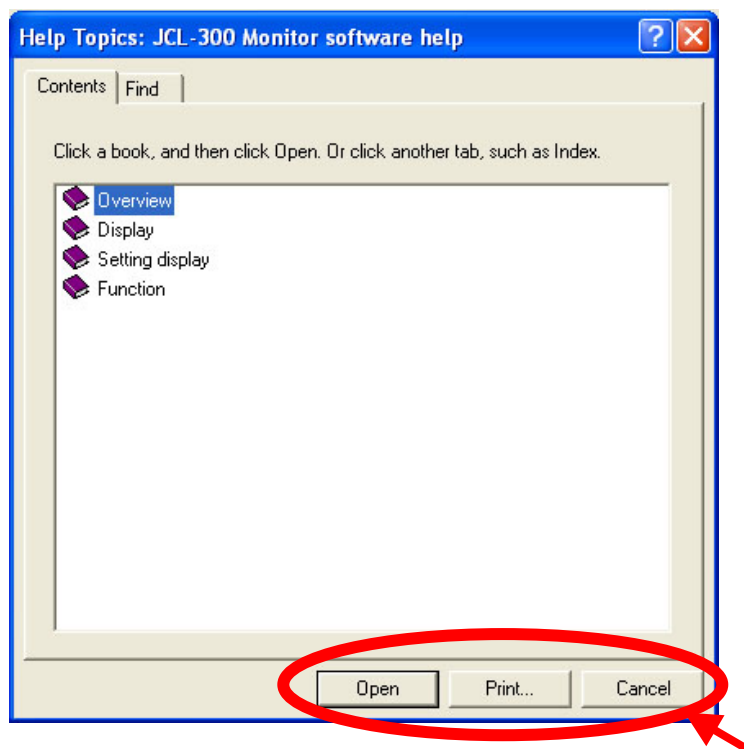
Each screen and operation method are explained.

- ① Select [Help(H)] on the menu bar – [Help(M)], and click.



(Fig. 2.3.2-22)

- ② Help display appears.



(Fig. 2.3.2-23)

Operation explanation

[Open] button : Clicking this button opens the selected Help contents.

If the closed book icon is selected, the book is opened.

If the opened book icon is selected, the book is closed.

[Print...] button : Clicking this button prints the selected Help contents.

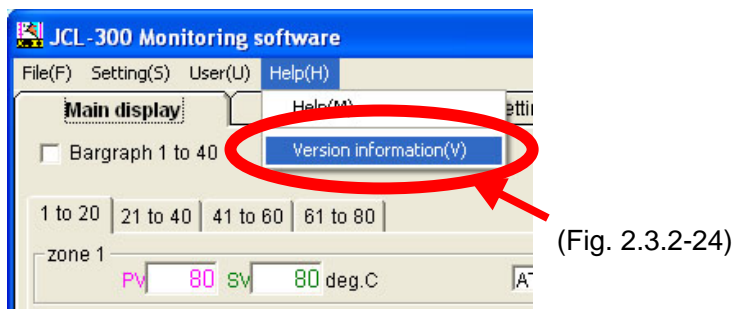
If the book icon is selected, all contents in the book are printed.

[Cancel] button: Clicking this button closes the Help display.

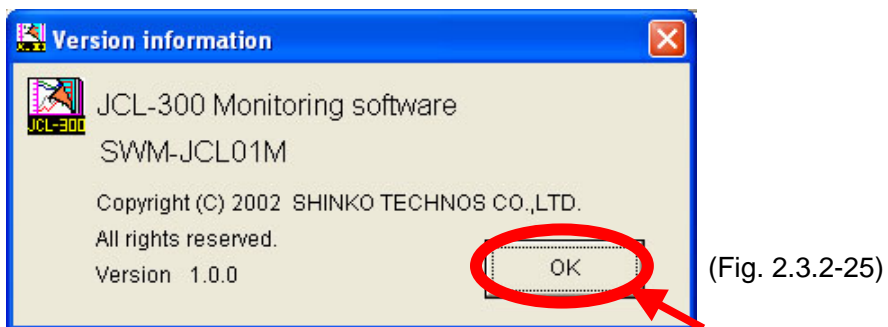
(10) Version information display

Version information on the monitoring software is described.

- ① Select [Help(H)] on the menu bar – [Version information(V)], and click.



- ② Version information display appears.



Operation explanation

[OK] button: Clicking this button closes Version information display.

***** Inquiry *****

For any inquiries about this software, please contact the shop where you purchased the software or our agency.

Please let us know the details of malfunction, if any, and the operating conditions.

SHINKO TECHNOS CO.,LTD.
OVERSEAS DIVISION

Reg. Office: 2-5-1, Senbahigashi, Minoo, Osaka, Japan

URL : <http://www.shinko-technos.co.jp>

E-mail : overseas@shinko-technos.co.jp

Tel : 81-72-727-6100

Fax: 81-72-727-7006

No.SWMJCL31E2 2006.04