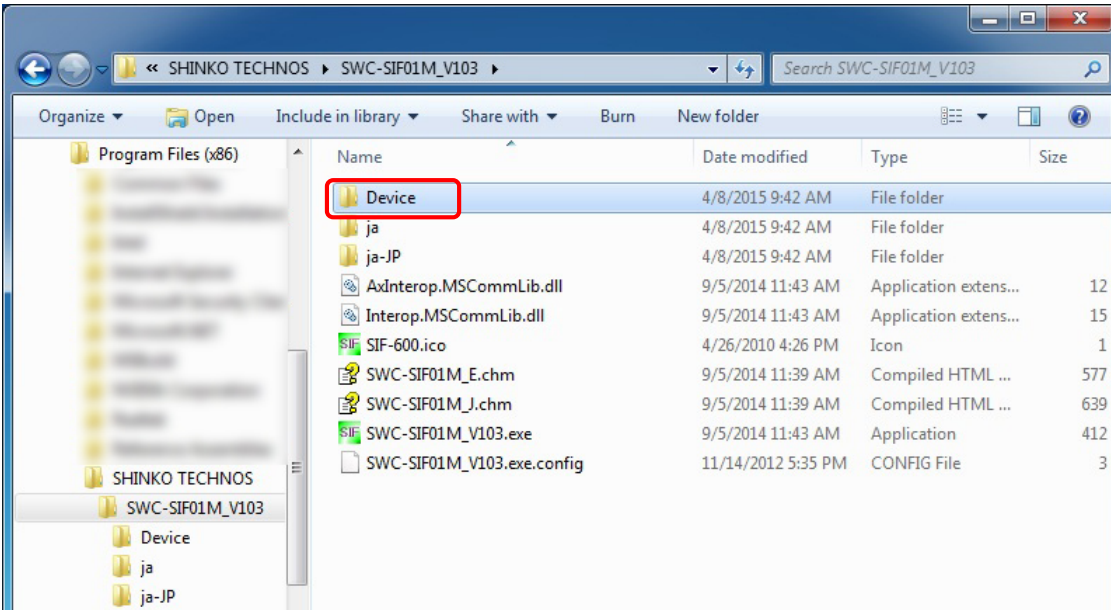


# How to Add BCx2 Series Difference File

By adding the BCx2 series difference file, BCx2 series data item list can be displayed when setting PLC data area via Console software.

Procedure for adding BCx2 series difference file

1. Download the BCx2 series difference file (17\_BCx2.zip), and unzip it.
2. Click the “Device” folder in the Console software SWC-SIF01M\_V103.  
(Program Files – SHINKO TECHNOS – SWC-SIF01M\_V103 – Device)



3. Paste the unzipped BCx2 series difference file (17\_BCx2.dat).

