

和文は裏面をご覧ください。

QUICK REFERENCE [Applicable model: SGF, SGFW, SGFL]

No. SGF12JE1 2018.10

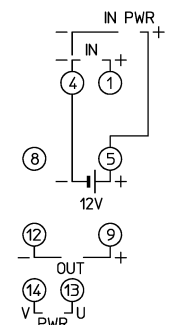
Model Name

SGF □ - F □ □ □ - 0 - □

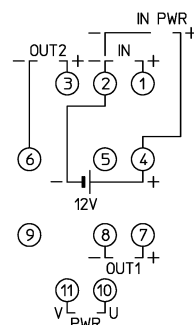
- Option
 - 0: No option needed, 2: Moisture-proof treatment
 - Power supply
 - 100 to 240 V AC
 - Output 2 (for SGFW only)
 - Output 1
 - Input
 - Series name
 - SGF: 1-output SGFW: 2-outputs
 - SGFL: 1-output + Serial communication
- (For detailed input/output spec, refer to the full Instruction Manual.)

Terminal Arrangement

SGF, SGFL



SGFW



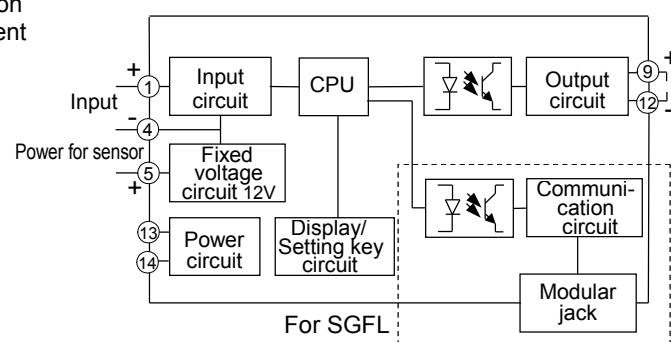
SGFL only

RS-485 serial communication
Modular jack pin arrangement

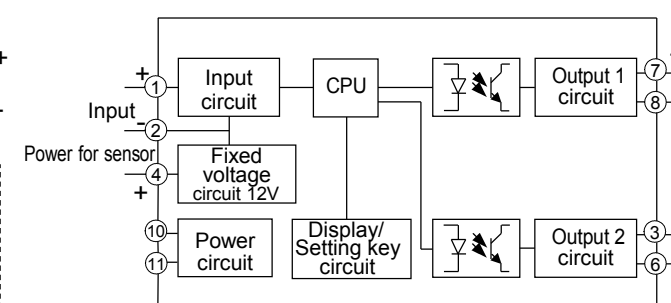
No. 1	COM
No. 2	NC
No. 3	YB(+)
No. 4	YA(-)
No. 5	NC
No. 6	COM

Circuit Configuration

SGF, SGFL



SGFW



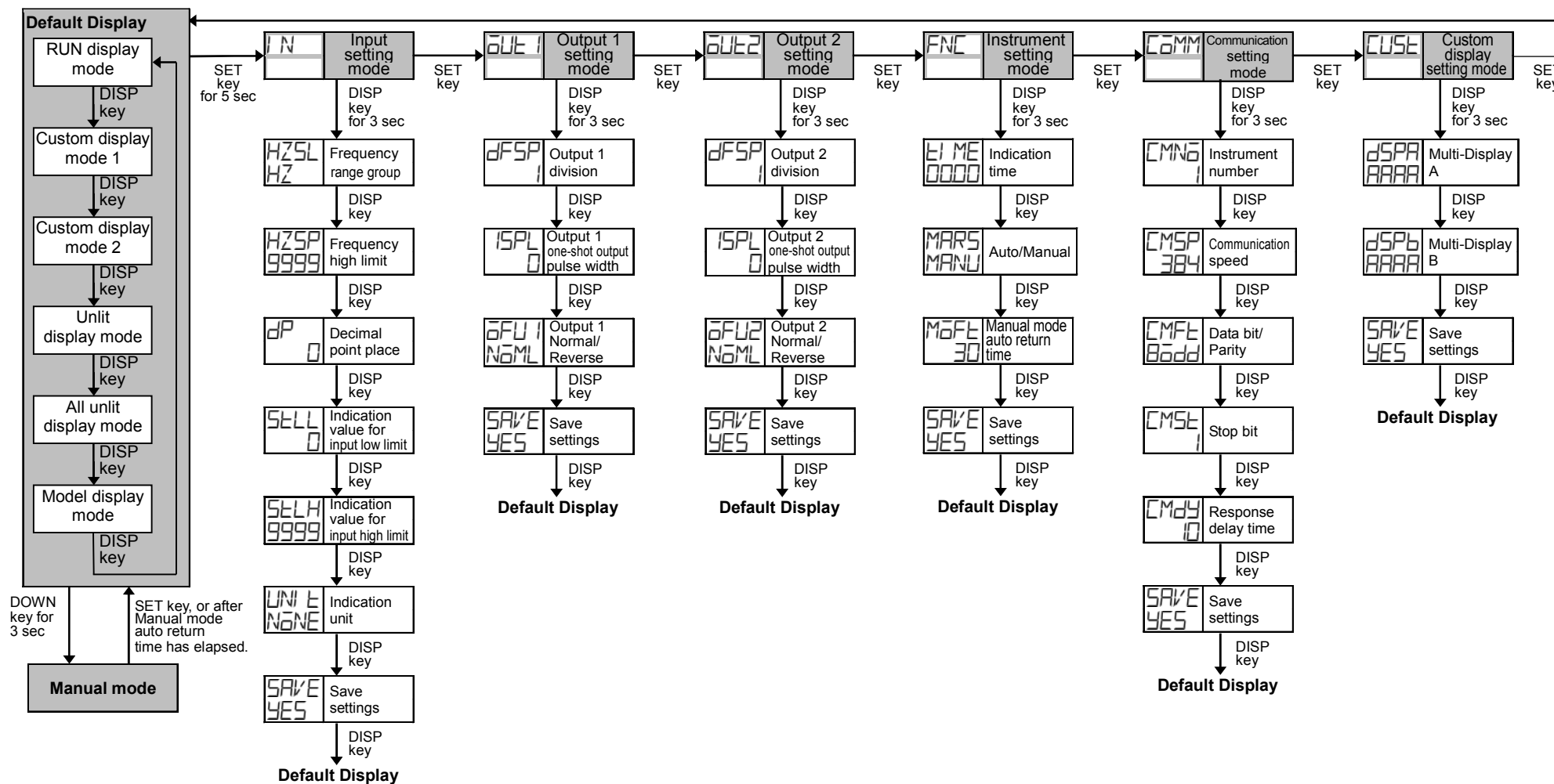
Characters

Indication	4	0	1	2	3	4	5	6	7	8	9	C	F
Number, °C/°F	-1	0	1	2	3	4	5	6	7	8	9	°C	°F
Indication	A	B	C	D	E	F	G	H	I	J	K	L	M
Alphabet	A	B	C	D	E	F	G	H	I	J	K	L	M
Indication	N	O	P	Q	R	S	T	U	V	W	X	Y	Z
Alphabet	N	O	P	Q	R	S	T	U	V	W	X	Y	Z

Selection Item List

Frequency range group	MA	mA	Communication speed		
MHZ	Ultra-low frequency	VOLTE	V	96	9600 bps
HZ	Low frequency	CELS	°C	192	19200 bps
KHZ	Frequency	Save settings		384	38400 bps
Decimal point place	YES	Save	Data bit/Parity		
□	No decimal point	NO	Not save	8N0N	8 bits/No parity
□□	1 digit after point	Output 1,2 Normal/Reverse	8EVN	8 bits/Even	
□□□	2 digits after point	NOML	Normal	8odd	8 bits/Odd
□□□□	3 digits after point	REVS	Reverse		Stop bit
Indication unit	Auto/Manual			1	1 bit
NONE	No unit	AUTO	Auto	2	2 bits
PER	%	MANU	Manual		

Key Operation Flowchart



Display Mode

- For the details of the display mode, refer to the full Instruction Manual.

Default Display

- If the SHIFT and DISP keys (in that order) are pressed together for approx. 3 seconds in any display mode, the display mode will become the Default Display.
- Once the Default Display is set, the DISP key will be in lock status.
- If the DISP key is pressed for approx. 3 seconds, the key lock status will be cancelled.
- If the DISP key is pressed while the DISP key is in lock status, Multi-Display A will indicate **LOCK**.

Setting Mode

- Output 2 setting mode is available only for the SGFW.
- Communication setting mode is available only for the SGFL.
- If the SET key is pressed for approx. 5 seconds in each setting mode, the unit will move to the Default Display.